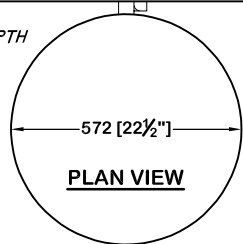
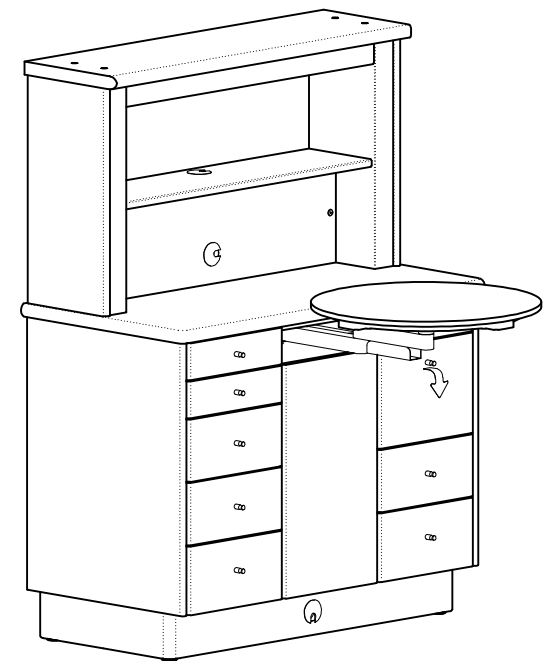
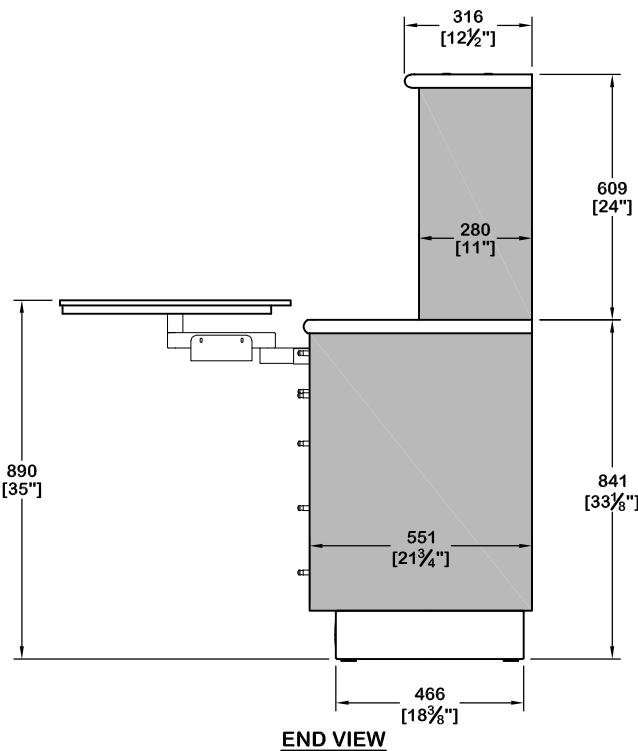
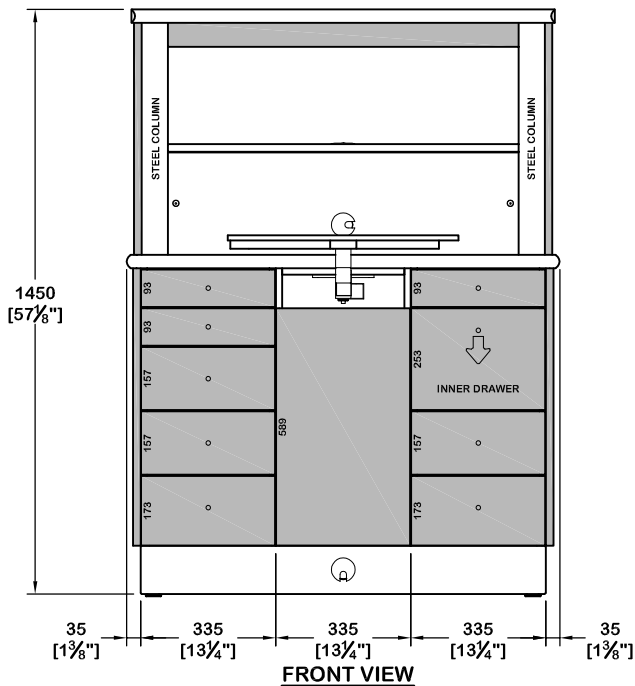


\*ALSO AVAILABLE IN 19" DEPTH



STANDARD REAR SUPPORT CONFIGURATION. SHOWN WITH WORK SURFACE OPTION '3' DUO SWING TABLE. PLEASE SEE RS-OPTION PAGES FOR NUMEROUS WORK SURFACE, HUTCH, AND BASE MODULE CONFIGURATIONS.

● ACCENT COLOR  
○ BASE COLOR



ISOMETRIC VIEW

SERIES:  SIGNATURE  MERIDIAN  
 DEPTH:  19"  23"  
 COUNTER:  SOLID SURFACE  LAMINATE  STONE COLOR: \_\_\_\_\_  
 BASE COLOR: \_\_\_\_\_ ACCENT COLOR: \_\_\_\_\_  
 FINISHED BACK:  YES  NO COLOR: \_\_\_\_\_  MONOTONE



DRAWING DETAIL		DRAWING NAME	
REAR SUPPORT - 23" DEEP HUTCH CAP		RS-23-CAP	
DRAWN BY	DATE	SCALE	VIEW
MLW	05-JUL-18	NTS	AS SHOWN
COPYRIGHT NOTICE			
© Copyright of Bow Wood Dental Systems Inc. All Rights Reserved. No part of this drawing may be reproduced or distributed in any form without prior written permission from Bow Wood Dental			