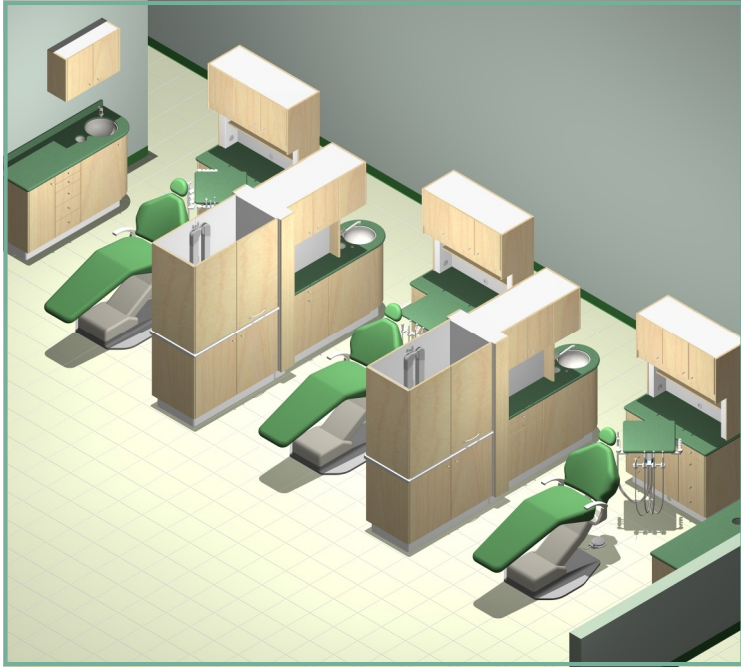


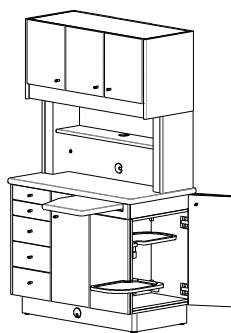
**BowWood**  
cabinet systems

## *SPECIFICATIONS BOOK*

*Designed to fit. Built to perform.*

*We Accommodate All Brands and Types of Delivery Systems and Major Dental Equipment.*





## MERIDIAN SERIES

<i>ORDERING INFORMATION</i>	<i>1A</i>
<i>WARRANTY</i>	<i>1A</i>
<i>REAR SUPPORT CABINETS</i>	<i>1-11</i>
<i>REAR SUPPORT PEX</i>	<i>12-14</i>
<i>CENTRE ISLAND CABINETS</i>	<i>15-20</i>
<i>SIDE CABINETS</i>	<i>21-24</i>
<i>STERILIZATION CENTRE CABINETS</i>	<i>25-29</i>
<i>MOBILE CART / PASS THROUGH</i>	<i>30</i>



# ORDERING INFORMATION



- 1 *SELECT A STANDARD CABINET*
- 2 *ADD OPTIONAL CONFIGURATION FEATURES*
- 3 *ADD OPTIONS AND ACCESSORIES*
- 4 *PICK YOUR COLORS*

Check or circle appropriate selections on a photocopied order checklist. Fill in the prices on your choices as appropriate, total, and indicate the quantity required.

Please fill in separate checklist for each cabinet unless all options are identical. Upon finalizing an order, Bow Wood will provide a line drawing, pricing sheet and a delivery date. Allow six weeks for standard orders, custom orders may take longer.

The following pages show standard configurations and designs. Bow Wood has extensive capabilities in specialist requirements and equipment accommodation. If you require dimensions or layouts different to these shown, please contact us and we will be pleased to provide customized designs to suit your project requirements.

## WARRANTY

### TWO YEAR WARRANTY

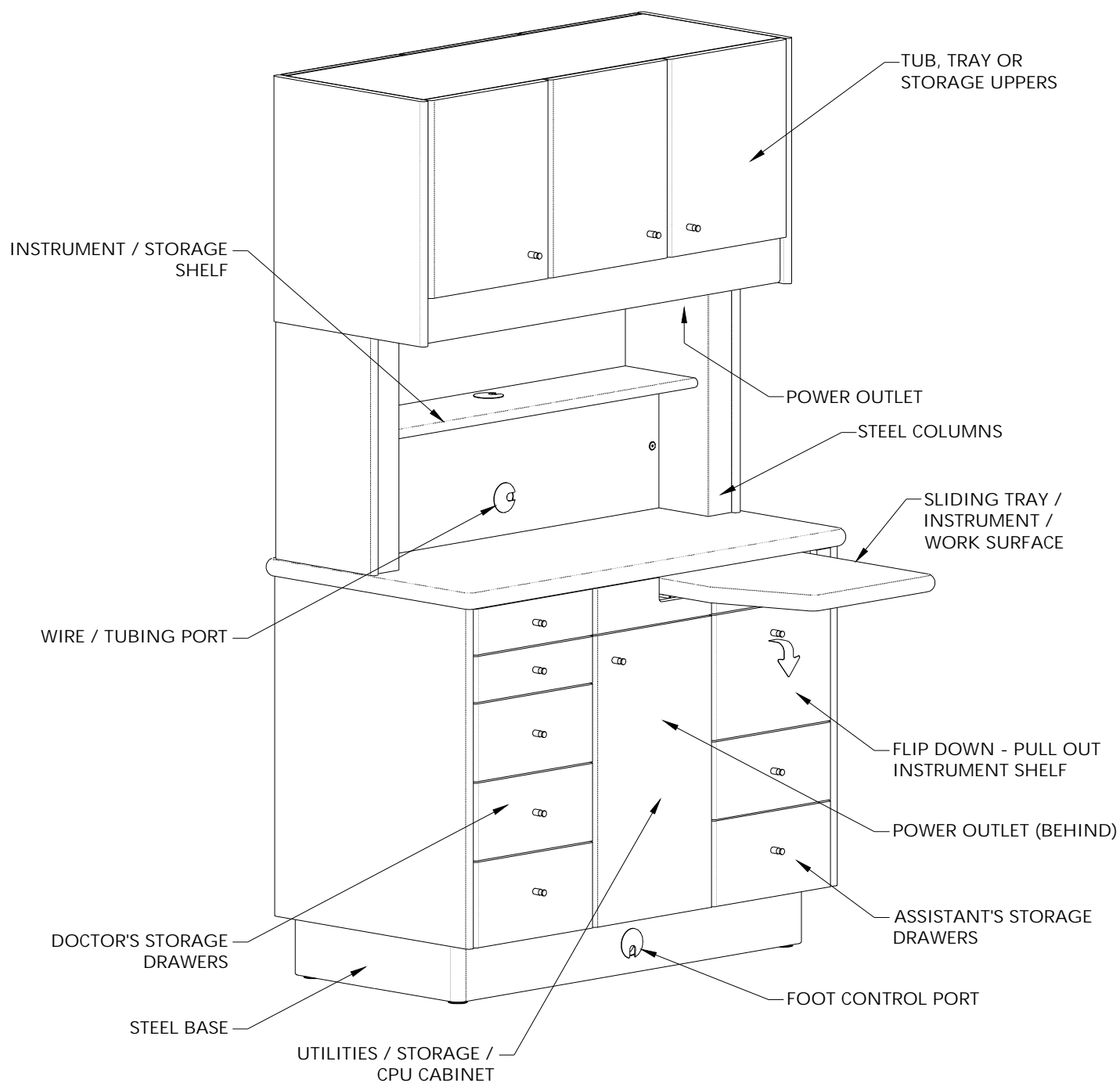
Guaranteed to be free from defects in workmanship and materials for two years from the date of purchase. Warranty covers the replacement of defective parts or components only (labor not included). Warranty does not cover damage by misuse, improper installation or accident. Warranty does not cover damage or discoloration caused by cleaning or disinfecting processes and chemicals. Freight damage is the responsibility of the freight carrier.



# REAR SUPPORT CABINETS

PRODUCT FEATURES

**BowWood**  
cabinet systems

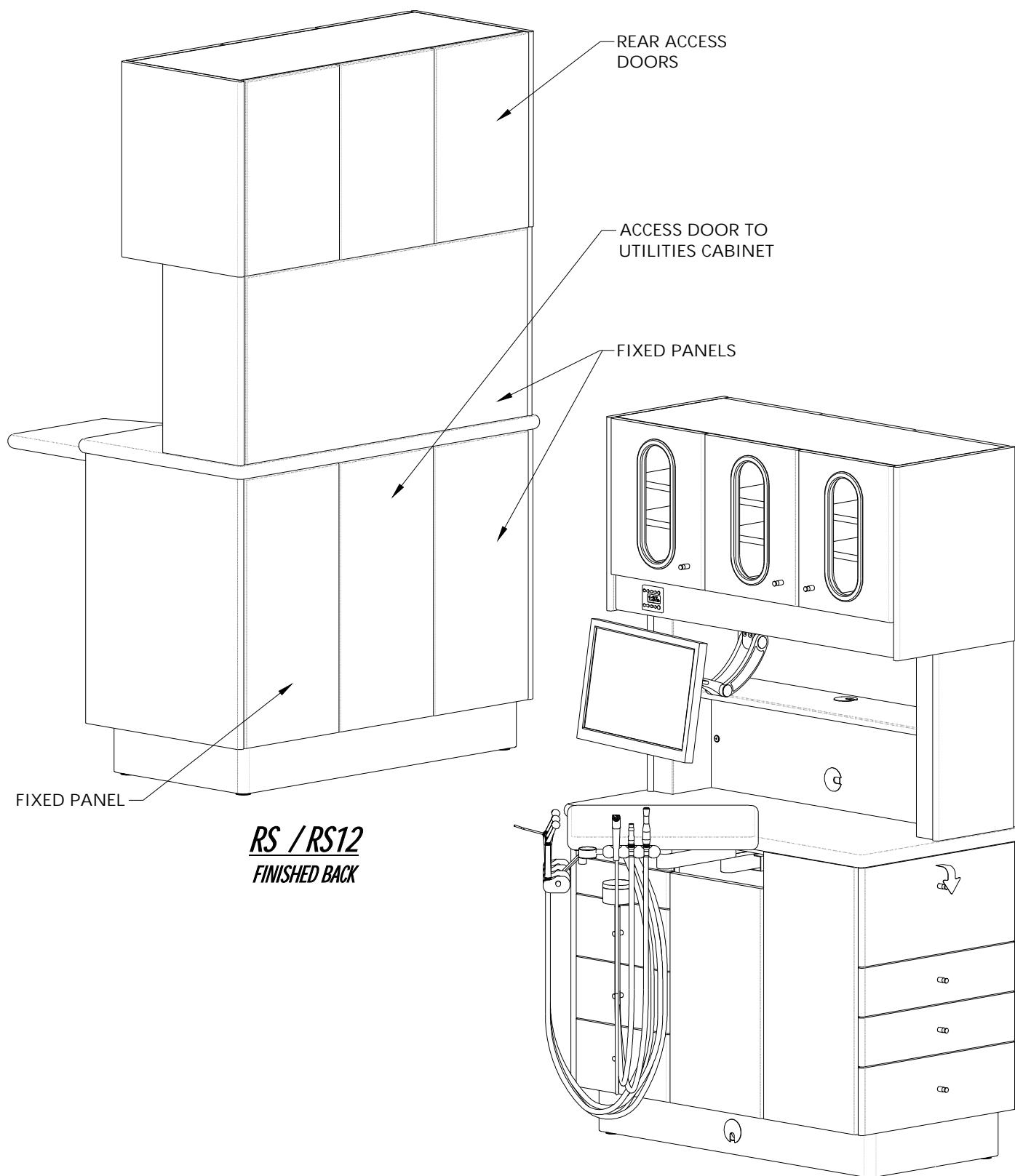


**RS / RS12**

# REAR SUPPORT CABINETS

PRODUCT FEATURES

**BowWood**  
cabinet systems

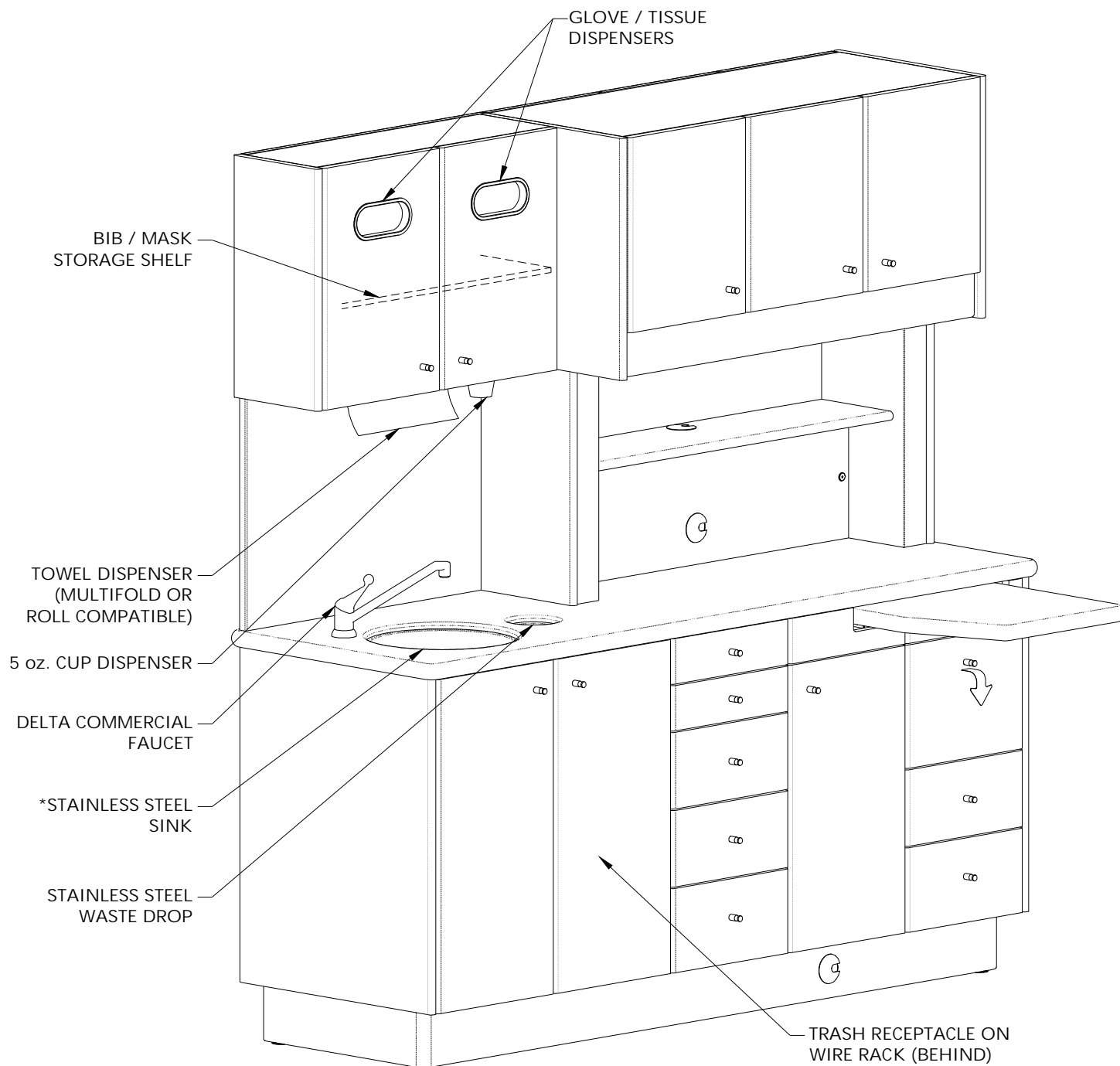


# REAR SUPPORT CABINETS

## PRODUCT FEATURES

(In Addition to Features Shown On RS / RS12)

**BowWood**  
cabinet systems



**RS1 / RS2**

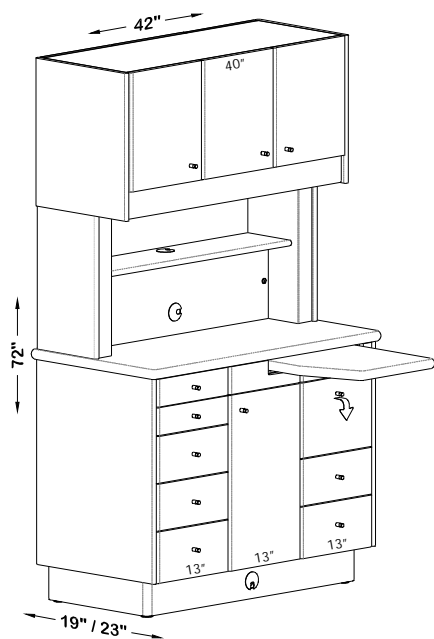
\*Sink under mounted when ordered w/ Solid Surface countertop



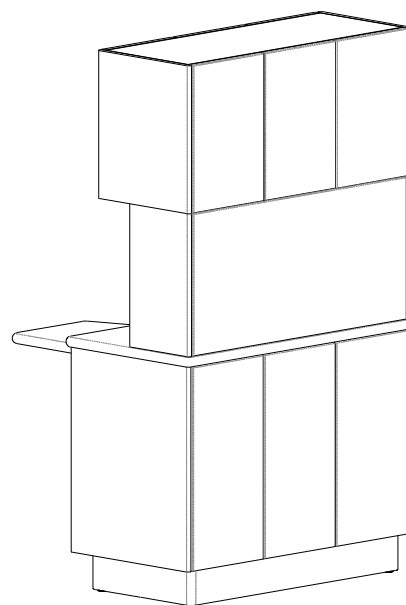
# REAR SUPPORT CABINETS

## STANDARD CONFIGURATIONS

**BowWood**  
cabinet systems

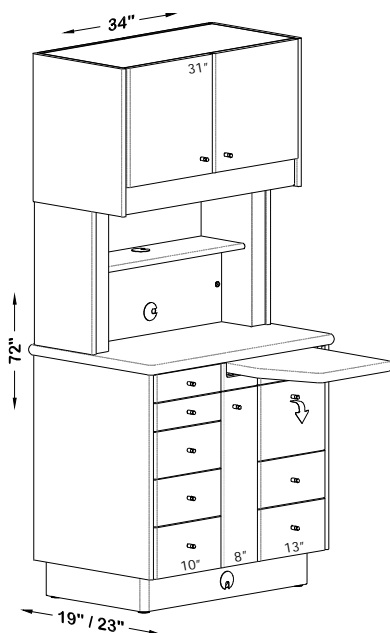


**RS 19" or 23"**

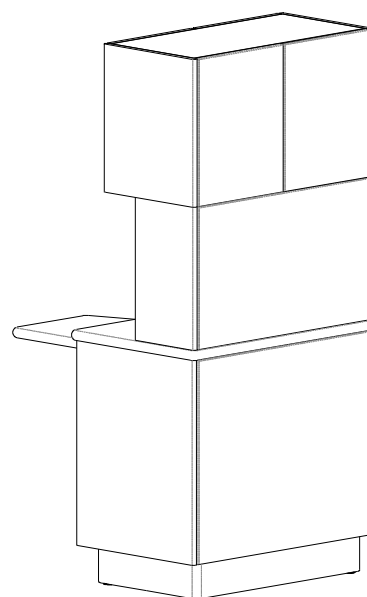


**w/ STANDARD FINISHED BACK  
AND PASS THROUGH UPPERS**

With Solid Surface or Laminate counters



**RS12 19" or 23"**



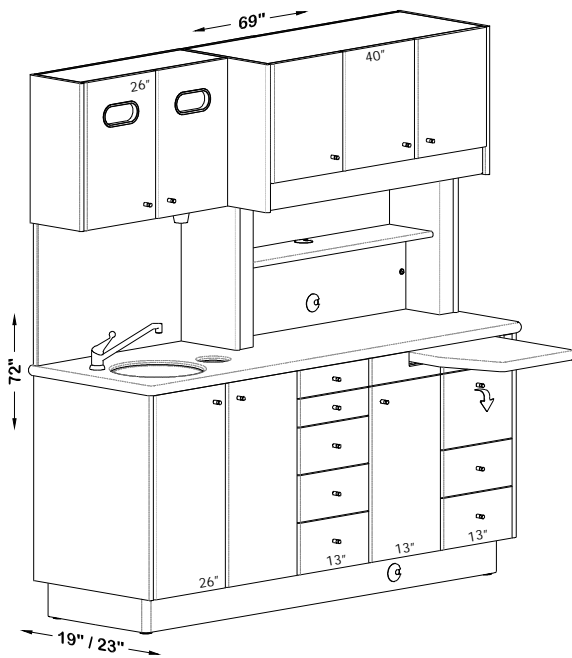
**w/ STANDARD FINISHED BACK  
AND PASS THROUGH UPPERS**

With Solid Surface or Laminate counters

# REAR SUPPORT CABINETS

STANDARD CONFIGURATIONS

**BowWood**  
cabinet systems



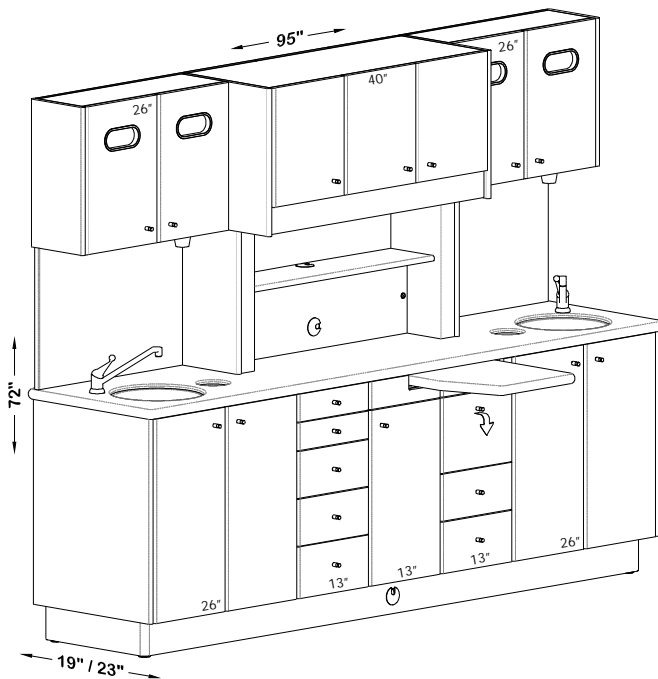
***RS1 L - Doctor's Side Sink***  
***19" or 23"***

← OR →

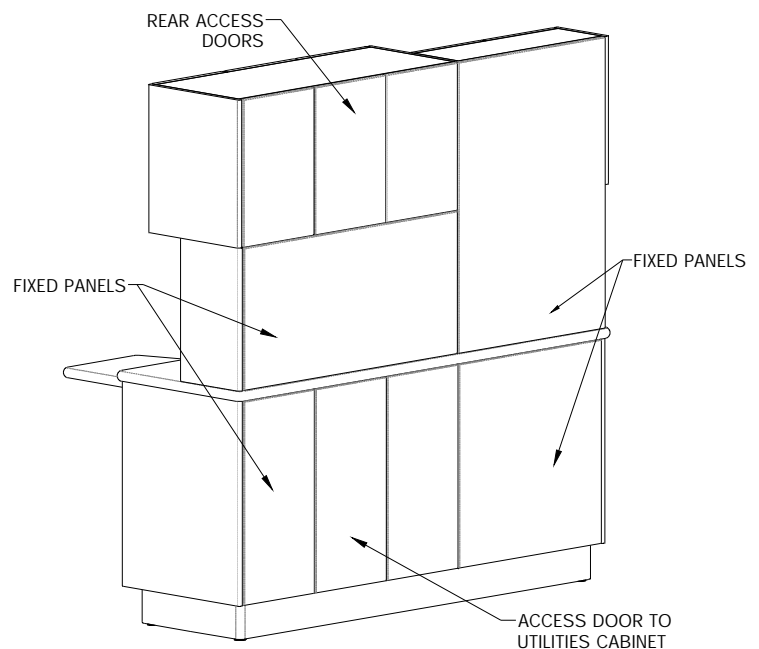


***RS1 R - Assistant's Side Sink***  
***19" or 23"***

With Solid Surface or Laminate counters



***RS2 - Standard***  
***19" or 23"***



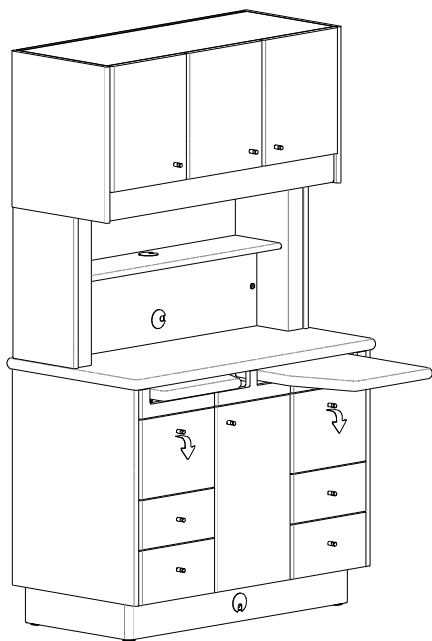
***RS1 / RS2***  
***Finished Back***

With Solid Surface or Laminate counters

# REAR SUPPORT CABINETS

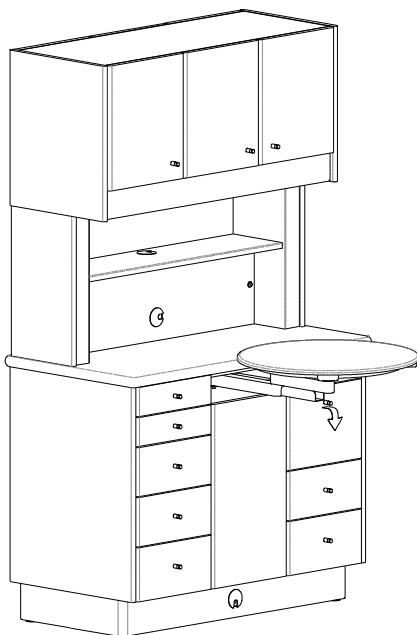
## OPTIONAL CONFIGURATIONS

**BowWood**  
cabinet systems



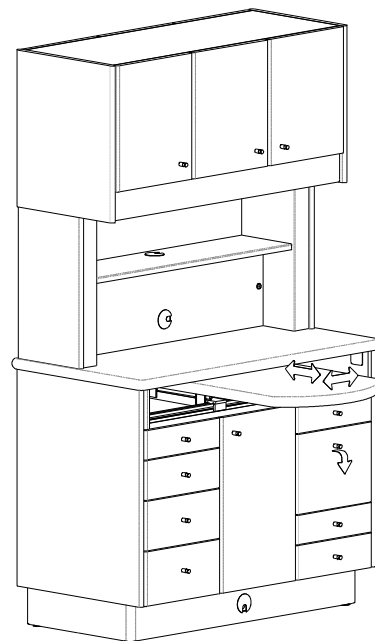
### DUAL L/R PULL-OUT COUNTERS

Solid Surface or Laminate



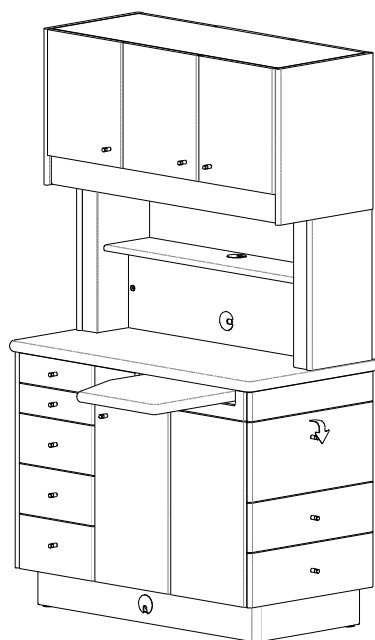
### DUO SWING TABLE (Solid Surface or Laminate)

Round or Square

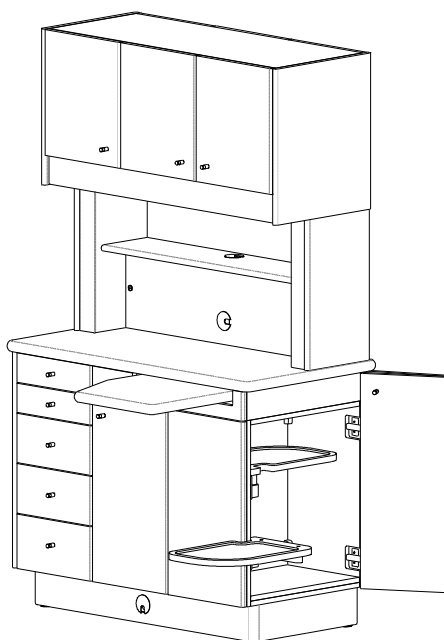


### LINEAR SLIDING COUNTER

Solid Surface or Laminate

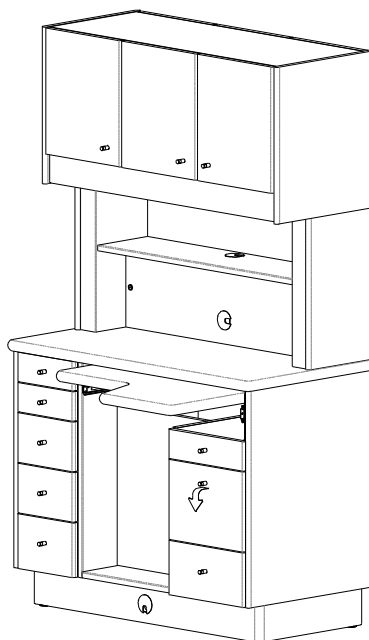


### SIDE OPENING DRAWERS



### SIDE OPENING SWING TRAY (2)

Additional trays available



### FOREST PULL-OUT

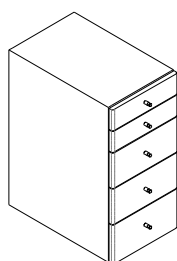
Solid Surface or Laminate



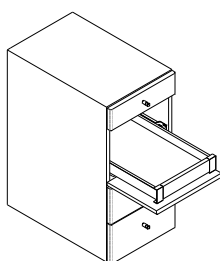
# REAR SUPPORT CABINETS

## DRAWER BANK OPTIONS

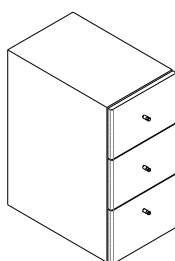
**Bow Wood**  
cabinet systems



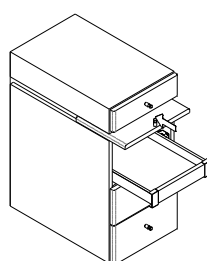
**DOCTOR'S STYLE**



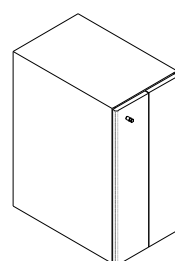
**ASSISTANT'S STYLE**



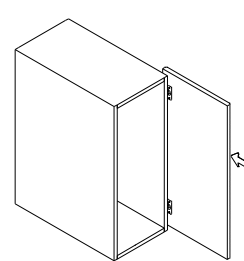
**EQUIPMENT STYLE**



**FLIP & PUSH STYLE**



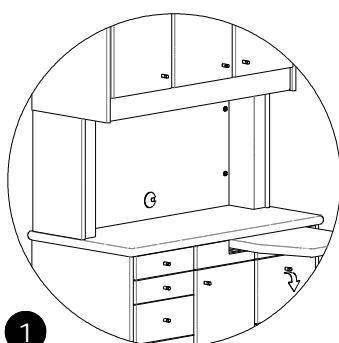
**BI-FOLD STYLE**



**POCKET STYLE**

Standard doctor's or assistant's drawers may be exchanged for any style shown, but may be subject to an upcharge.

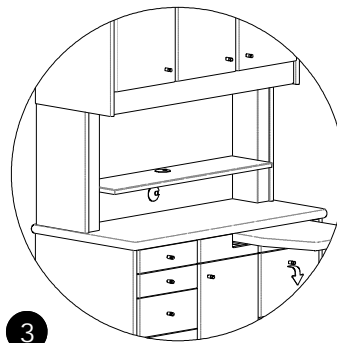
## MID-SECTION HUTCH OPTIONS



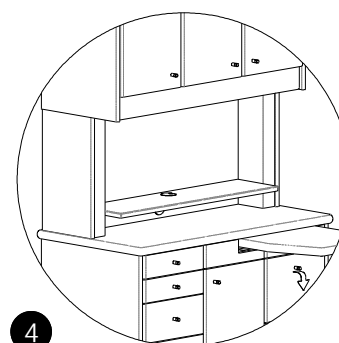
**1**  
**FULL SPLASH**



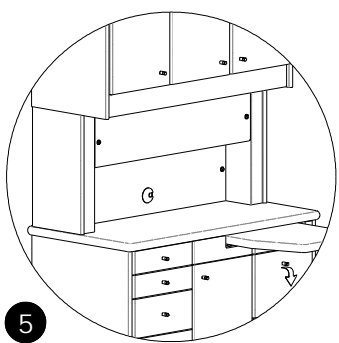
**2**  
**STANDARD SHELF**



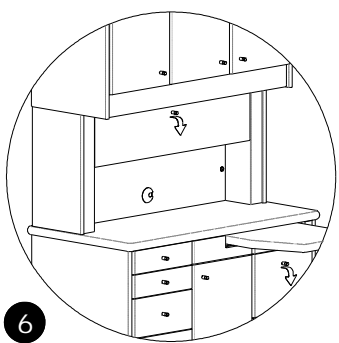
**3**  
**HALF HEIGHT SHELF**



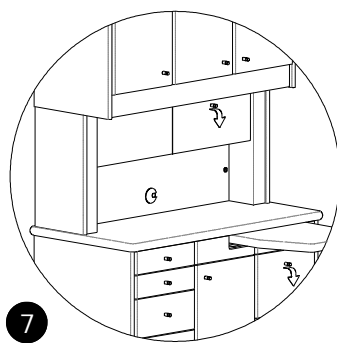
**4**  
**QUARTER HEIGHT SHELF**



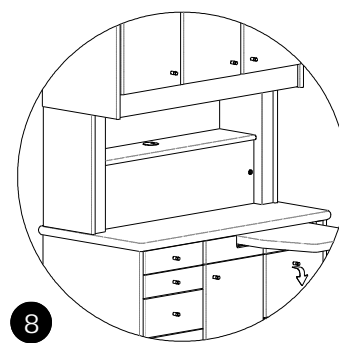
**5**  
**UPPER ACCESSORY PANEL**



**6**  
**UPPER STORAGE**



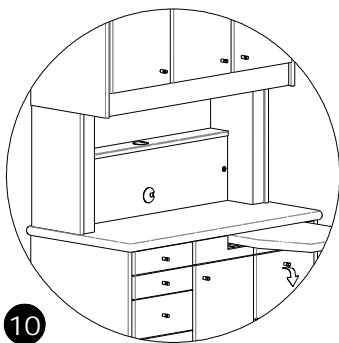
**7**  
**SPLIT STORAGE/ACCESSORY**



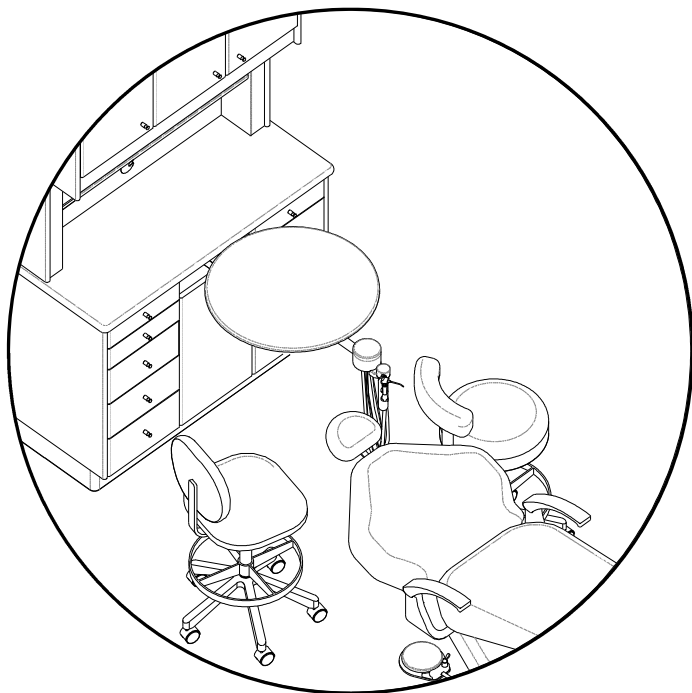
**8**  
**BASE ACCESSORY PANEL**



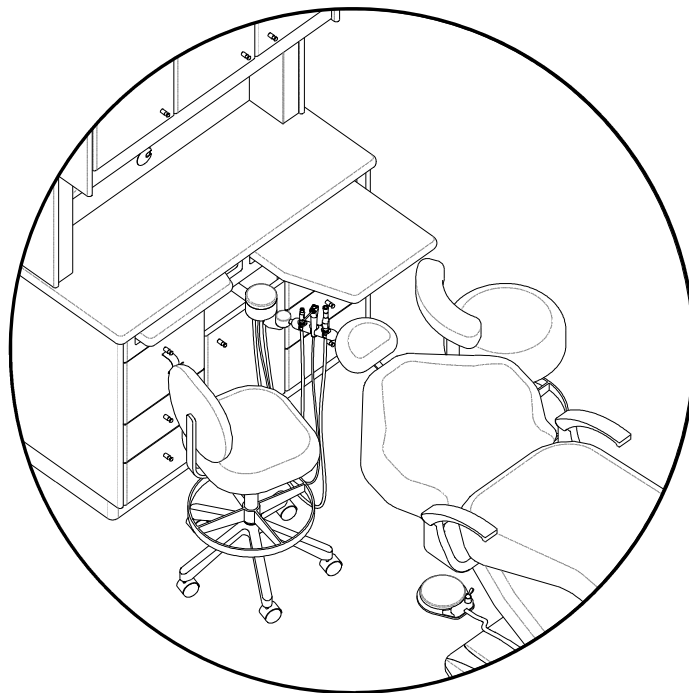
**9**  
**SPLIT SHELF**



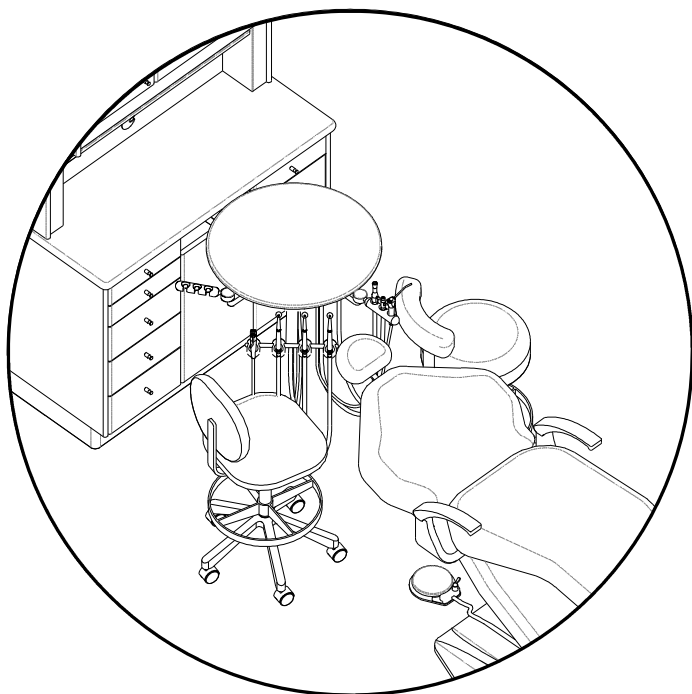
**10**  
**SHALLOW SHELF**



**ASSISTANT'S ARM - SWING TABLE MOUNT**



**ASSISTANT'S ARM  
 STANDARD OR DUAL PULL-OUT MOUNT**



**AMBIDEXTROUS DOCTOR'S & ASSISTANT'S COMBINATION**

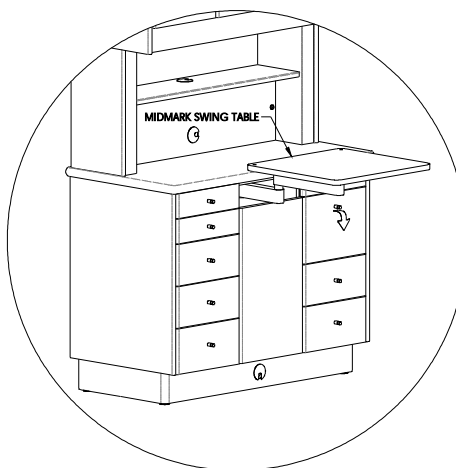
# REAR SUPPORT CABINETS

OPTIONAL REAR DELIVERY EQUIPMENT\*

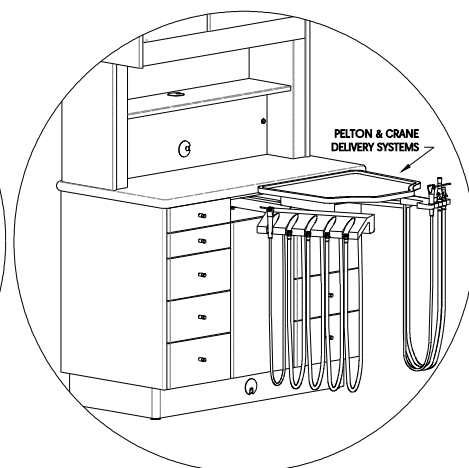
**Bow Wood**  
cabinet systems



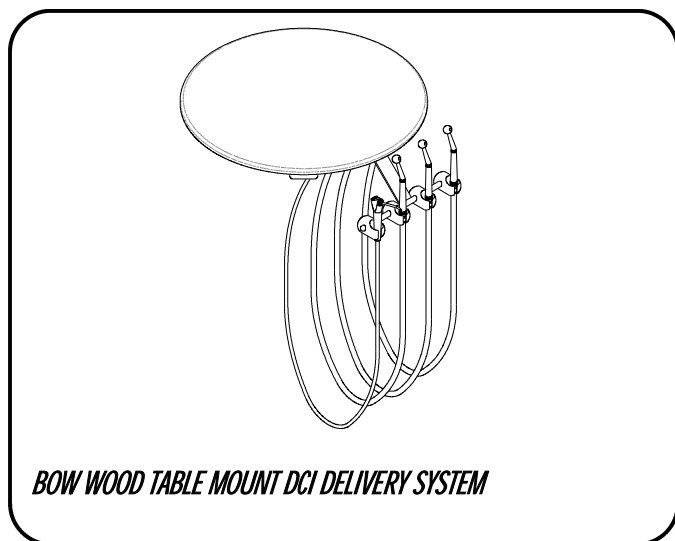
**ADEC DELIVERY SYSTEM ALLOWANCE**



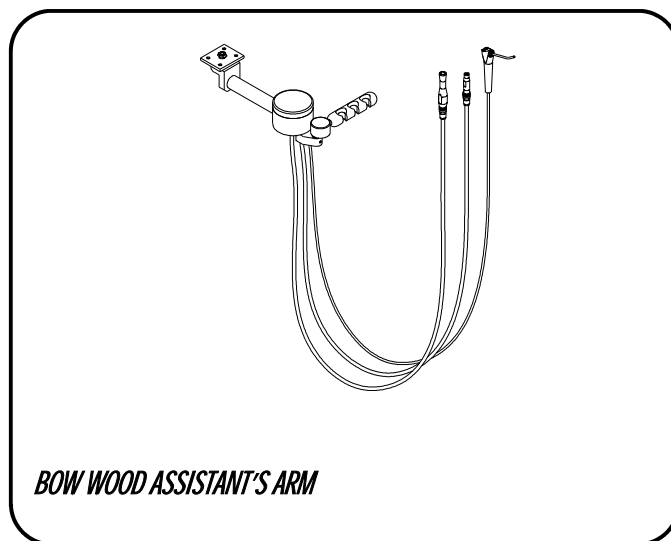
**MIDMARK SWING TABLE ALLOWANCE**



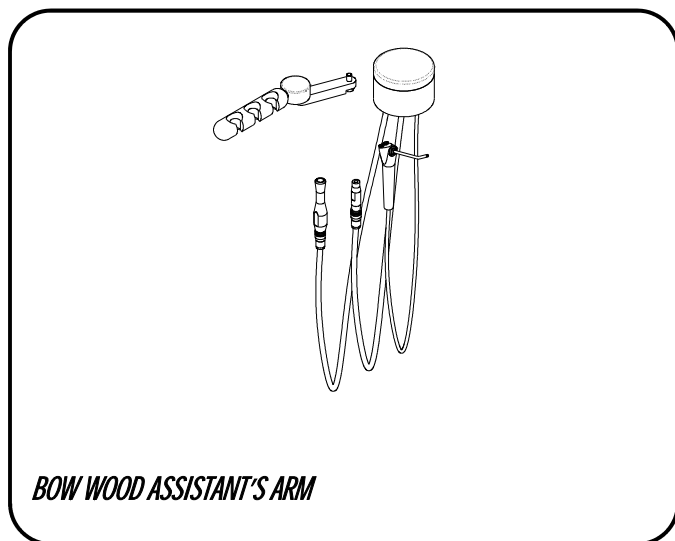
**PELTON & CRANE DELIVERY ALLOWANCE**



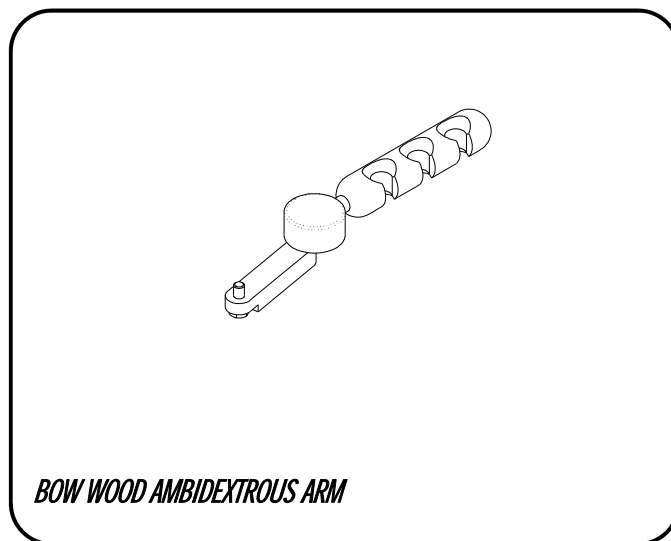
**BOW WOOD TABLE MOUNT DCI DELIVERY SYSTEM**



**BOW WOOD ASSISTANT'S ARM**



**BOW WOOD ASSISTANT'S ARM**



**BOW WOOD AMBIDEXTROUS ARM**

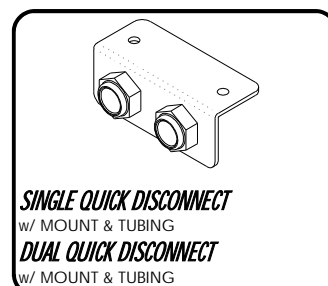
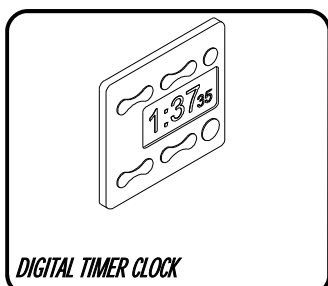
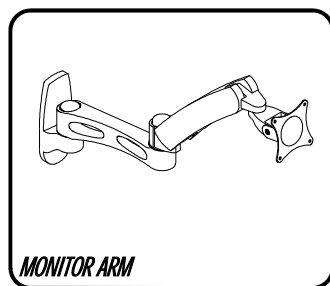
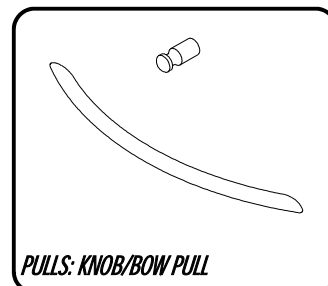
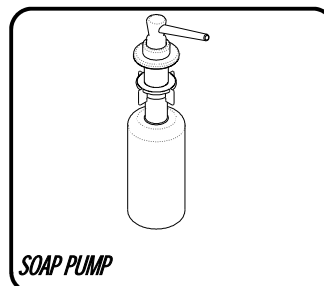
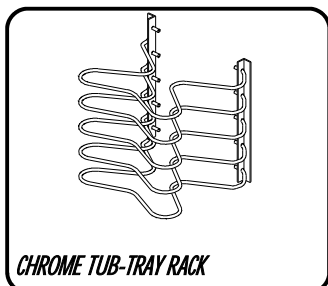
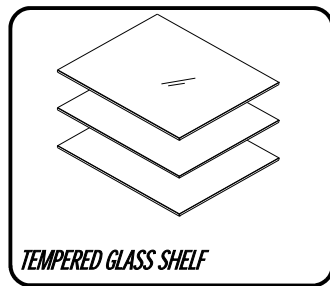
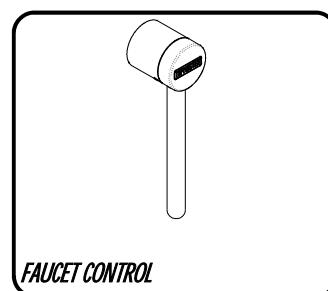
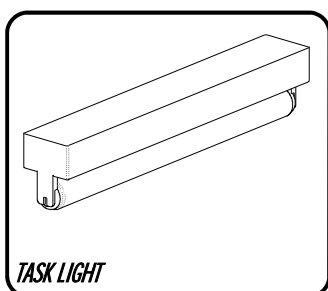
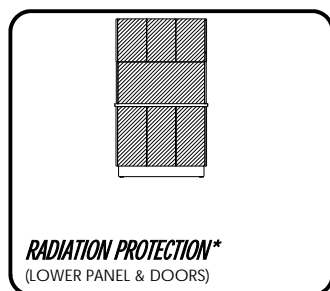
**\*6 MONTH WARRANTY**



# REAR SUPPORT CABINETS

## OPTIONS AND ACCESSORIES

**BowWood**  
cabinet systems



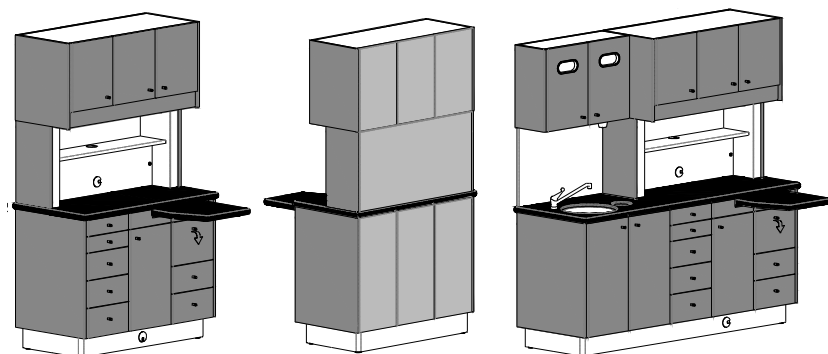
## COLOR LOCATIONS

□ = **BASE COLOR**

■ = **ACCENT**

■ = **FINISHED BACK**

■ = **COUNTER TOP**



## SPECIAL COLOR INFORMATION

Other solid surface colors and laminates from Wilsonart, Formica, Nevamar and Pionite are available, subject to an additional charge, per color, per order. Color sample chips and other information is available on the internet and at local dealers specializing in these materials.

### BASE COLOR

- Surf
- Antique White

### COUNTER TOP COLORS

#### Solid Surface

Meridian Series - See brochure for standard options.  
Signature Series - See brochure for standard options, or specify color required.

### ACCENT / FINISHED BACK COLORS

Meridian Series - See brochure for standard options.  
Signature Series - Specify color required.

#### Plastic Laminate

Meridian Series - See brochure for standard options.  
Signature Series - Specify color required.

Special order colors can be specified in Signature Series, upcharge may apply.

\*1/64" LEAD IN AREA SHOWN. BOW WOOD ACCEPTS NO RESPONSIBILITY FOR COMPLIANCE WITH YOUR LOCAL RADIATION PROTECTION LAWS. CHECK WITH YOUR GOVERNING BODY TO ASSURE COMPLIANCE.

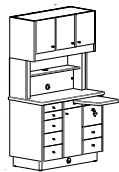
# REAR SUPPORT CABINETS

## ORDER CHECKLIST

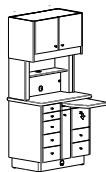
**Bow Wood**  
cabinet systems

PLEASE MARK AN "X" CLEARLY IN THE APPROPRIATE BOXES

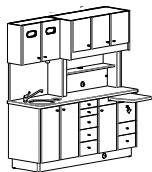
### 1 STANDARD CONFIGURATIONS



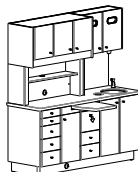
☐ RS



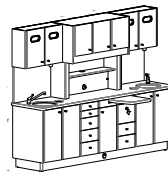
☐ RS 12



☐ RS1 L

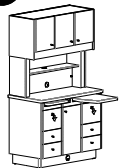


☐ RS1 R



☐ RS2

### 2 OPTIONAL CONFIGURATIONS



☐ Dual L/R  
Sliding Counters



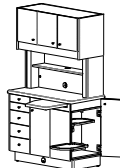
☐ Duo  
Swig Table



☐ Linear  
Sliding Counter



☐ Side  
Opening Drawers  
☐ Dr ☐ Ast



☐ Side Opening  
Swing Tray  
☐ Dr ☐ Ast



☐ Forest  
Pull-out

### 3 HUTCH OPTIONS

- ☐ (1) Full Splash ☐ (2) Standard Shelf  
☐ (3) Half Shelf ☐ (4) Quarter Shelf  
☐ (5) Upper Accessory Panel  
☐ (6) Upper Stotage  
☐ (7) Split Storage/Accessory  
☐ (8) Base Accessory Panel  
☐ (9) Split Shelf ☐ (10) Shallow Shelf



1



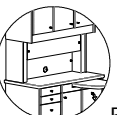
2



3



4



5



6



7



8



9



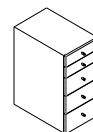
10

### 5 OPTIONS & ACCESSORIES

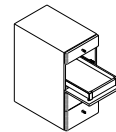
- Hardware: ☐ Knob ☐ Bow-Pull  
 Task Light: ☐ No ☐ Yes  
 Oval Windows: ☐ No ☐ Yes (Qty: \_\_\_\_\_)  
 Tempered Glass Shelves: ☐ No ☐ Yes (Qty-pkg of 3: \_\_\_\_\_)  
 Extra Glove Dispensers: ☐ No ☐ Yes (Qty: \_\_\_\_\_)  
 Chrome Tub/Tray Racks: ☐ No ☐ Yes  
 Soap Pump: ☐ No ☐ Yes  
 Digital Timer Clock: ☐ No ☐ Yes  
 Foot Activated Faucet: ☐ No ☐ Yes  
 Dual Foot Activated Faucet: ☐ No ☐ Yes  
 Monitor Arm: ☐ No ☐ Yes (w/ KEY TRAY ☐)  
 DCI Water Bottle Kit: ☐ No ☐ Yes  
 Quick Connect: ☐ No ☐ Single ☐ Dual  
 Pan Viewer: ☐ No ☐ Yes  
 R.P. - RS & RS12: ☐ No ☐ Yes  
 R.P. - RS1: ☐ No ☐ Yes  
 R.P. - RS2: ☐ No ☐ Yes

Additional Options / Notes: \_\_\_\_\_  
 \_\_\_\_\_  
 \_\_\_\_\_

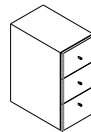
### 4 BANK OPTIONS



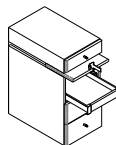
DR



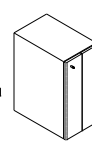
AST



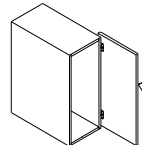
EQ



FP



BI



PS

Dr's Side: DR AST EQ FP BI PS  
 Ast's Side: DR AST EQ FP BI PS  
 (Circle One)

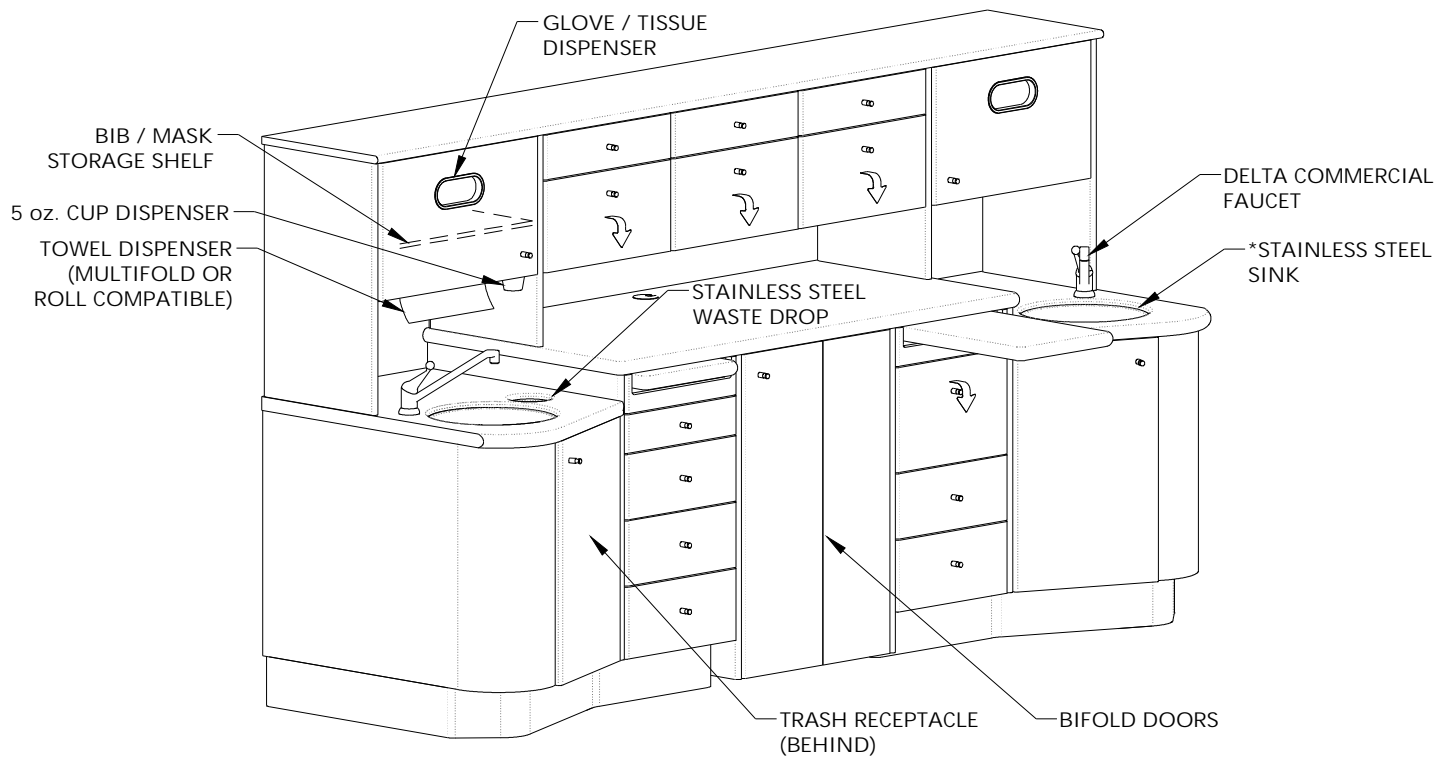
Finished Back: ☐ Yes ☐ No  
 Depth: ☐ 23" ☐ 19"  
 Countertop: ☐ Solid Surface  
☐ Laminate

Standard Conf. \$ \_\_\_\_\_  
 Optional Conf. \$ \_\_\_\_\_  
 Hutch Options \$ \_\_\_\_\_  
 Bank Options \$ \_\_\_\_\_

### 6 COLORS

Base Color: ☐ Surf ☐ Antique White Finished Back Color: \_\_\_\_\_ Countertop Color: \_\_\_\_\_  
 Accent Color: \_\_\_\_\_ (Colors chosen other than Bow Wood Select may be subject to an upcharge): \$ \_\_\_\_\_

Doctor's Name: \_\_\_\_\_ Approved By: \_\_\_\_\_ Number of Units: \_\_\_\_\_ TOTAL: \$ \_\_\_\_\_



**RS2 PEX**

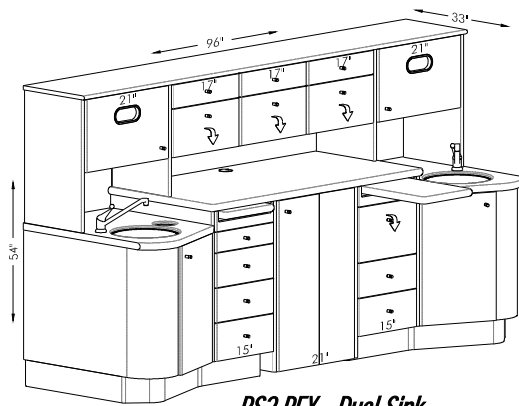
\*Sink under mounted when ordered w/ Solid Surface countertop.  
This cabinet is a direct replacement for a P & C 'Executive Cabinetry'.



# REAR SUPPORT PEX

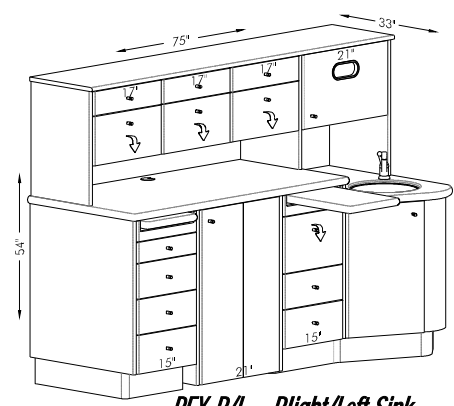
STANDARD CONFIGURATIONS

**Bow Wood**  
cabinet systems



**RS2 PEX - Dual Sink**

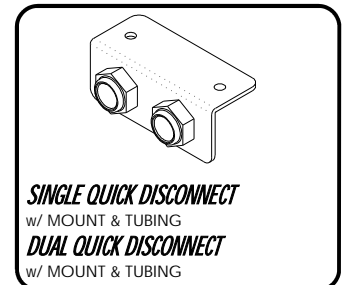
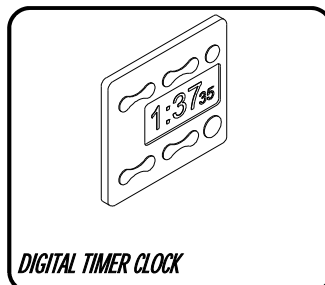
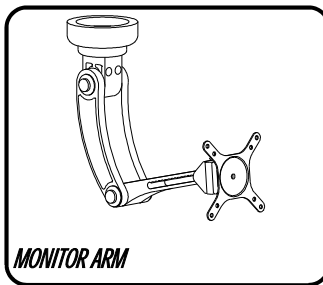
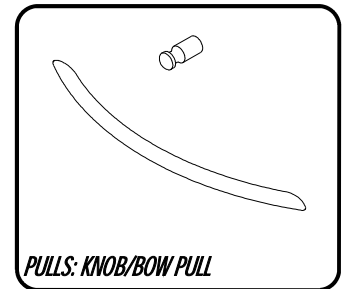
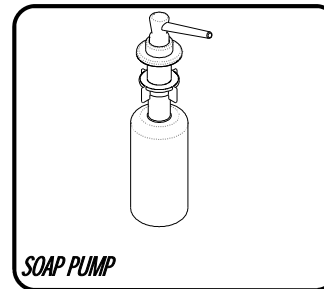
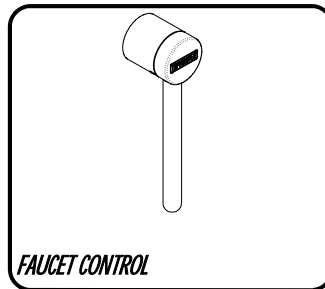
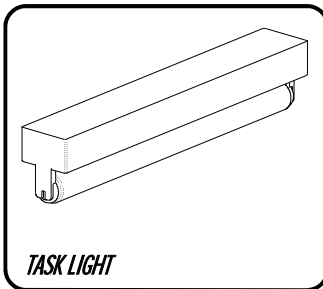
← OR →



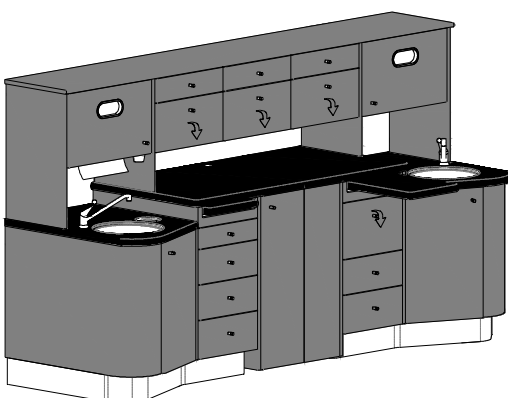
**PEX-R/L - Right/Left Sink**

With Solid Surface or Laminate counters

## OPTIONS & ACCESSORIES



## COLOR LOCATIONS



□ = BASE COLOR

■ = ACCENT

■ = COUNTER TOP

### BASE COLOR

- Surf
- Antique White

### ACCENT COLORS

Meridian Series - See brochure for standard options.  
Signature Series - Specify color required.

### COUNTER TOP COLORS

#### Solid Surface

Meridian Series - See brochure for standard options.  
Signature Series - See brochure for standard options, or specify color required.

#### Plastic Laminate

Meridian Series - See brochure for standard options.  
Signature Series - Specify color required.

Special order colors can be specified in Signature Series, upcharge may apply.

## SPECIAL COLOR INFORMATION

Other solid surface colors and laminates from Wilsonart, Formica, Nevamar and Pionite are available, subject to an additional charge, per color, per order. Color sample chips and other information is available on the internet and at local dealers specializing in these materials.

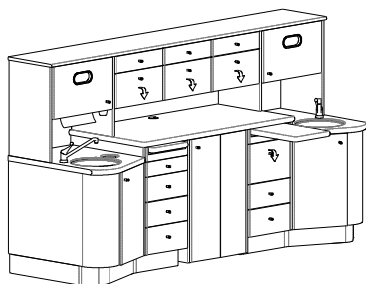
# REAR SUPPORT PEX

## ORDER CHECKLIST

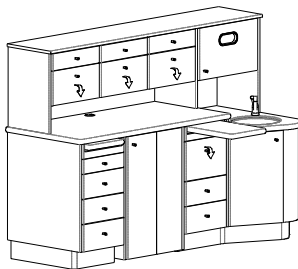
**BowWood**  
cabinet systems

PLEASE MARK AN "X" CLEARLY IN THE APPROPRIATE BOXES

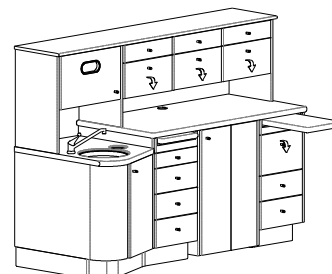
### 1 STANDARD CONFIGURATIONS



☐ RS2 PEX



☐ RS1 PEX-R



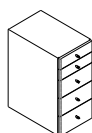
☐ RS1 PEX-L

Countertop: ☐ Solid Surface ☐ Laminate

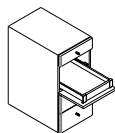
\$ \_\_\_\_\_

### 2 BANK OPTIONS

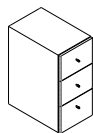
See page '7' for drawer bank pricing



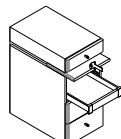
DR



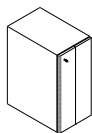
AST



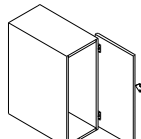
EQ



FP



BI



PS

Dr's Side: DR AST EQ FP BI PS

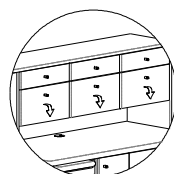
Asst's Side: DR AST EQ FP BI PS

(Circle One)

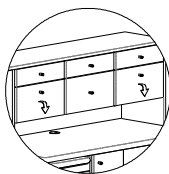
\$ \_\_\_\_\_

### 3 HUTCH OPTIONS

Any hutch bank can be exchanged with those shown below at no extra cost.



(1) 1 Drawer,  
1 Storage



(2) 2 Drawers



(3) 3 Drawers



(4) 1 Drawer,  
1 Accessory  
Panel



(5) Full Accessory  
Panel

Place the hutch number in the  
respective blank:

Left \_\_\_\_\_

Middle \_\_\_\_\_

Right \_\_\_\_\_

### 4 OPTIONS & ACCESSORIES

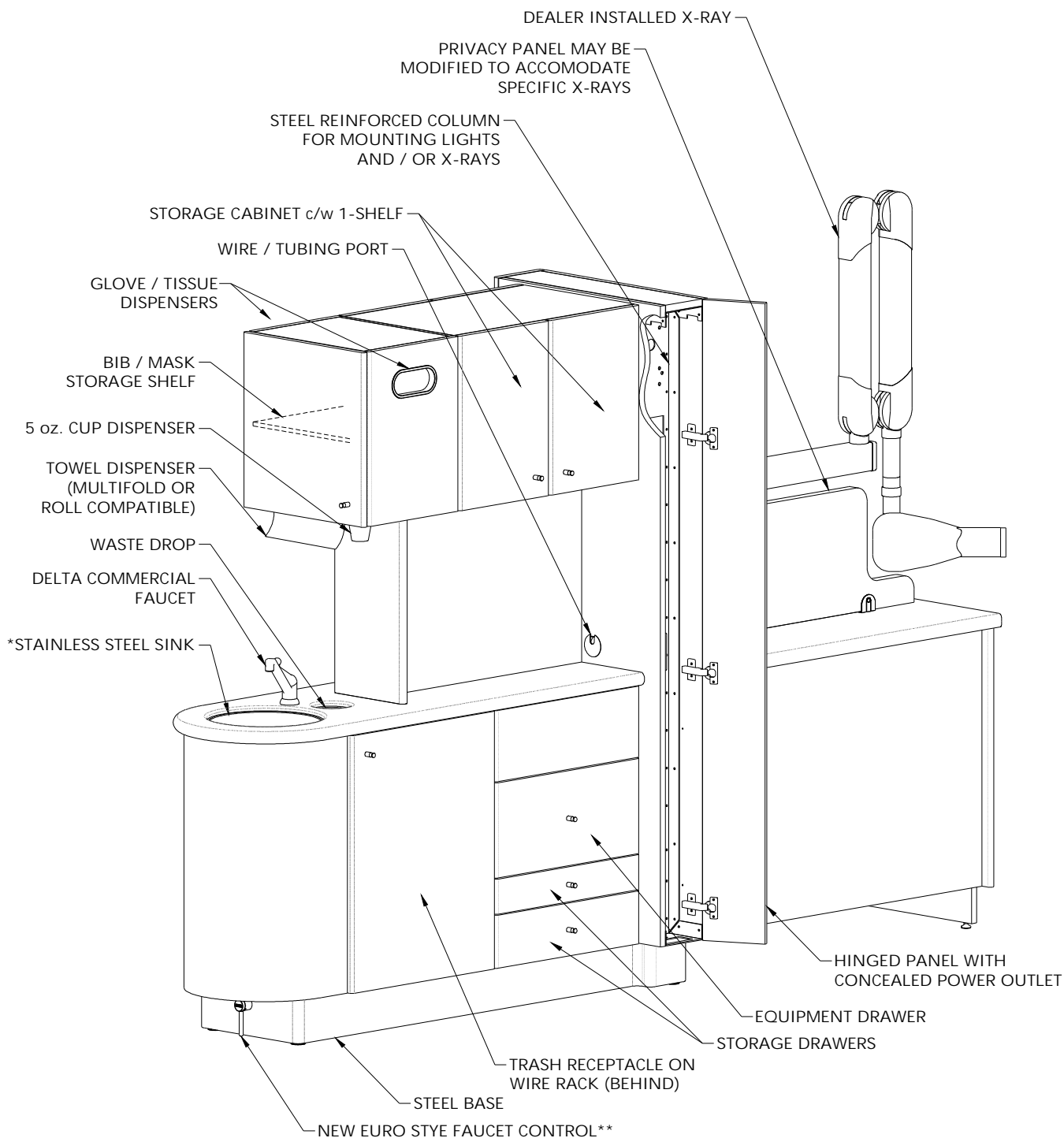
Hardware:	<input type="checkbox"/> Knob <input type="checkbox"/> Bow-Pull	\$ _____
Task Light:	<input type="checkbox"/> No <input type="checkbox"/> Yes	\$ _____
Extra Glove Dispensers	<input type="checkbox"/> No <input type="checkbox"/> Yes (Qty: _____)	\$ _____
Soap Pump:	<input type="checkbox"/> No <input type="checkbox"/> Yes	\$ _____
Digital Timer Clock:	<input type="checkbox"/> No <input type="checkbox"/> Yes	\$ _____
Foot Activated Faucet:	<input type="checkbox"/> No <input type="checkbox"/> Yes	\$ _____
Monitor Arm:	<input type="checkbox"/> No <input type="checkbox"/> Yes (w/ KEY TRAY <input type="checkbox"/> )	\$ _____
DCI Water Bottle Kit:	<input type="checkbox"/> No <input type="checkbox"/> Yes	\$ _____
Quick Connect:	<input type="checkbox"/> No <input type="checkbox"/> Single <input type="checkbox"/> Dual	\$ _____
Pan Viewer:	<input type="checkbox"/> No <input type="checkbox"/> Yes	\$ _____
Additional Options / Notes:	_____	\$ _____
	_____	\$ _____
	_____	\$ _____

### 5 COLORS

Base Color: ☐ Surf ☐ Antique White Countertop Color: \_\_\_\_\_

Accent Color: \_\_\_\_\_ (Colors chosen other than Bow Wood Select may be subject to an upcharge): \$ \_\_\_\_\_

Doctor's Name: \_\_\_\_\_ Approved By: \_\_\_\_\_ Number of Units: \_\_\_\_\_ TOTAL: \$ \_\_\_\_\_

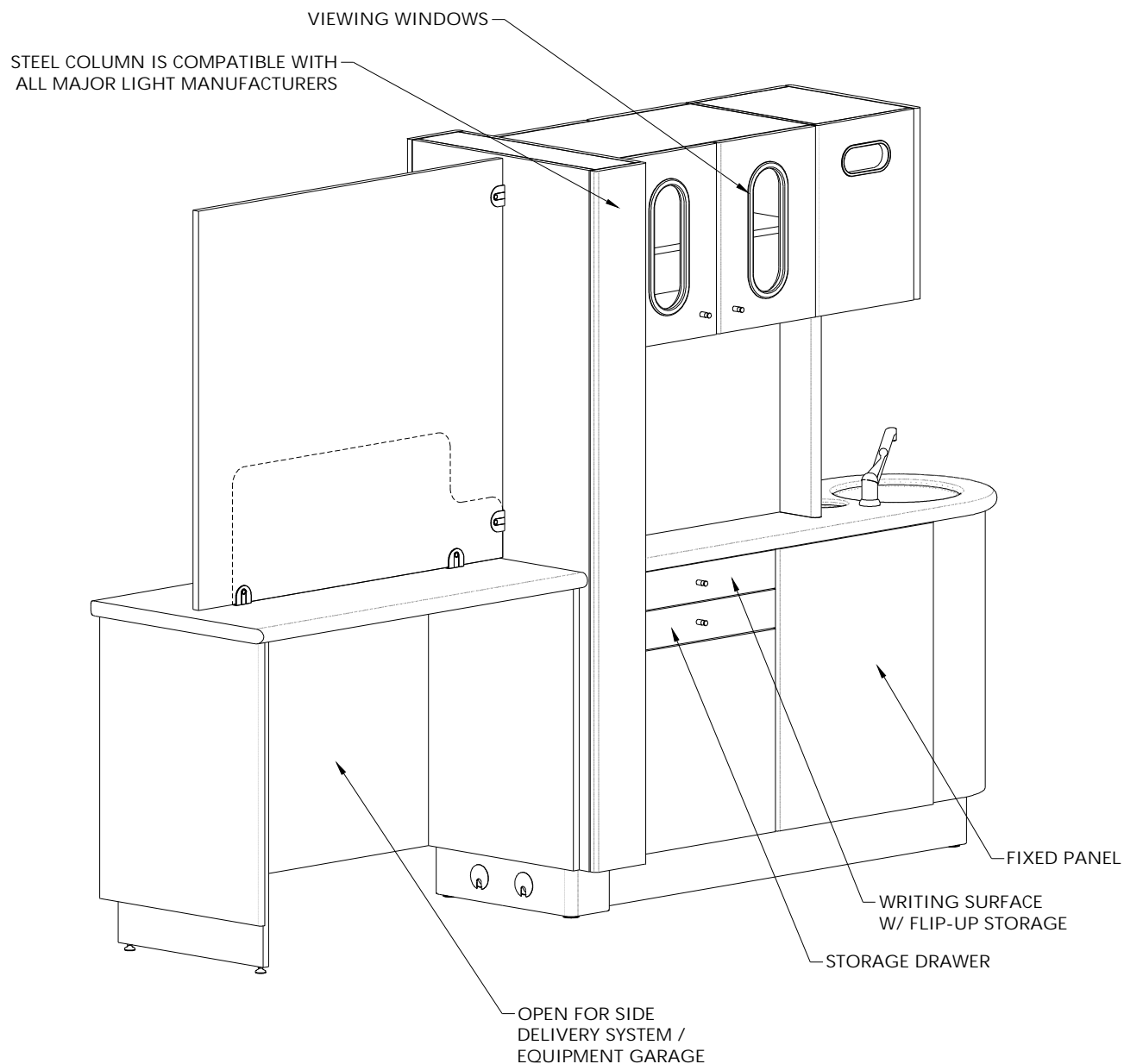


\*Sink under mounted when ordered w/ Solid Surface countertop.

\*\*Also available as dual.

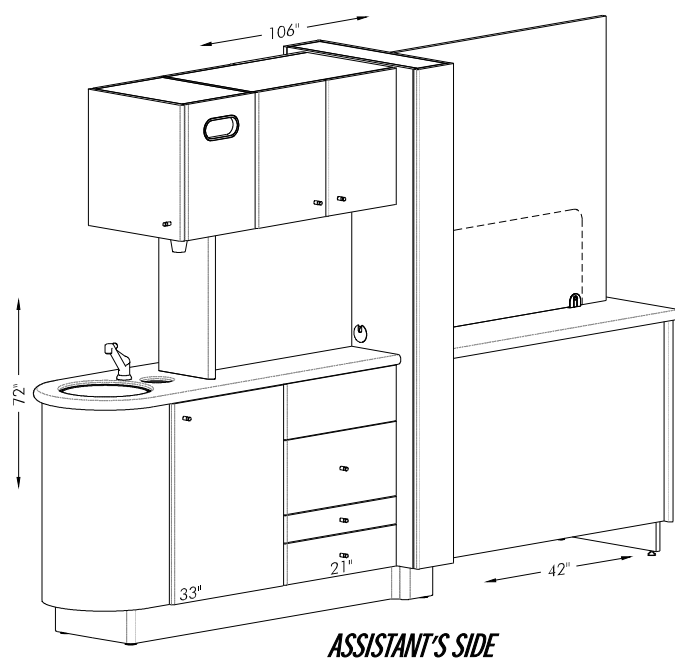
Some features shown are optional extras.

**CIR**  
ASSISTANT'S SIDE

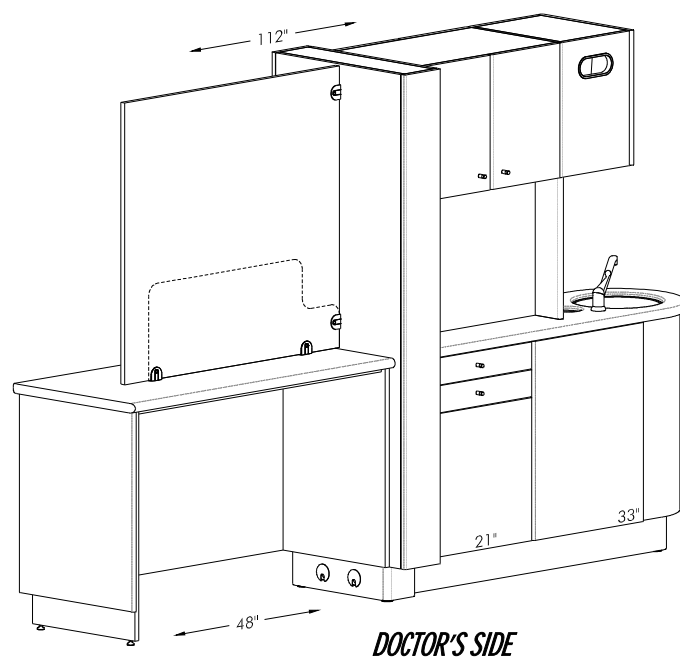


Some features shown are optional extras.

**CIR**  
DOCTOR'S SIDE



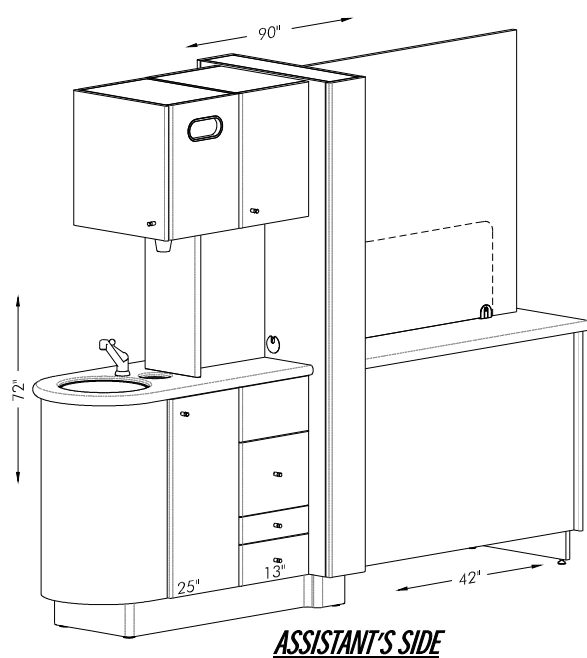
**ASSISTANT'S SIDE**



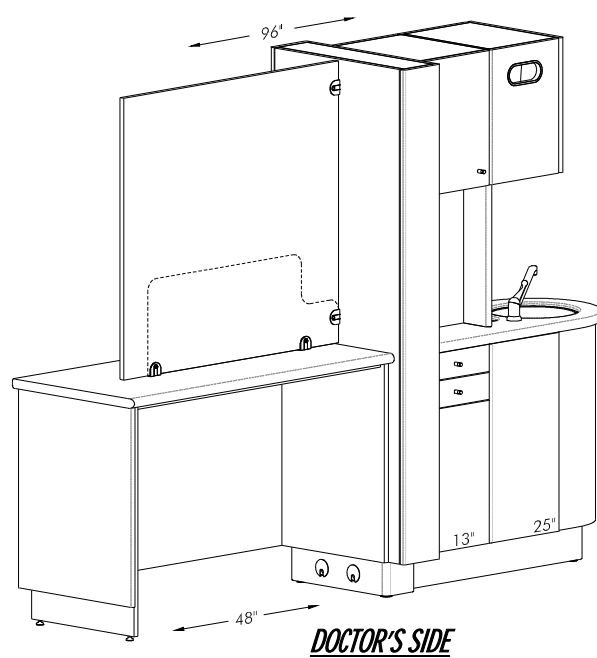
**DOCTOR'S SIDE**

**CIR**

With Solid Surface or Laminate counters



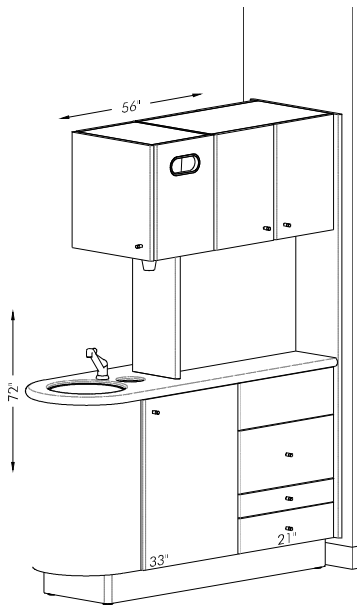
**ASSISTANT'S SIDE**



**DOCTOR'S SIDE**

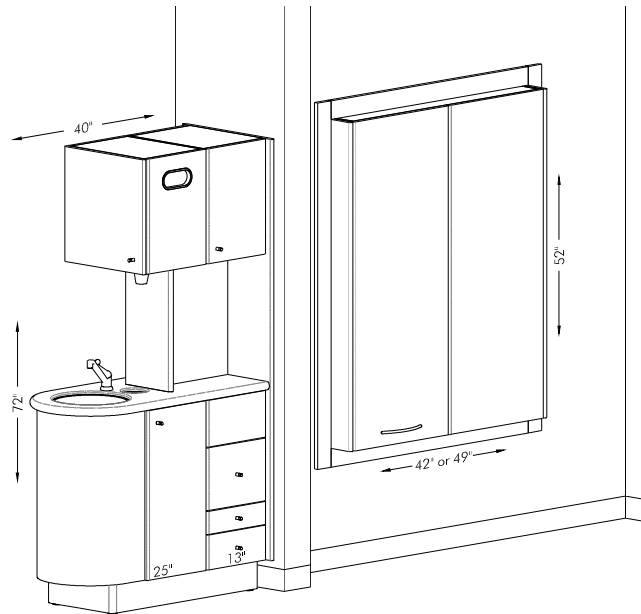
**CIRs**

With Solid Surface or Laminate counters



***CIR H***

With Solid Surface or Laminate counters

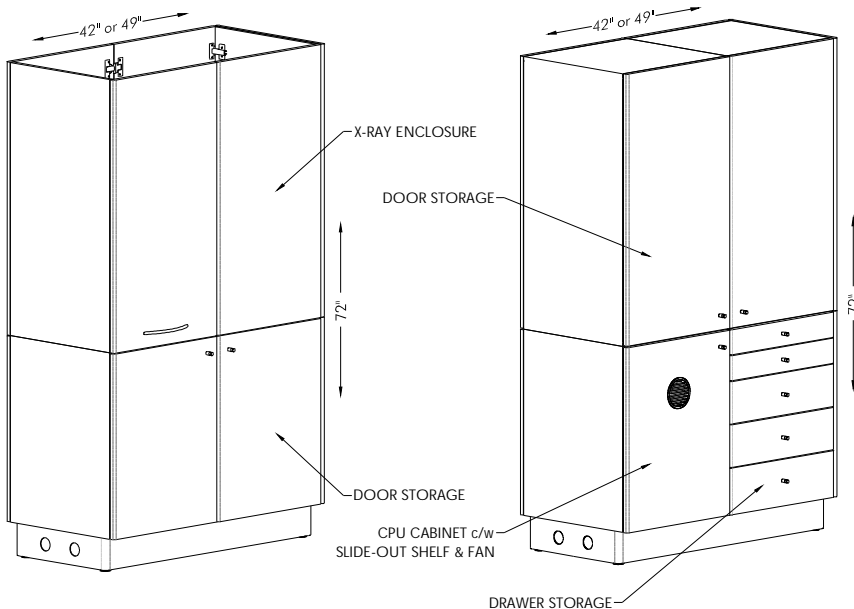


***CIRS H***

***X-RAY PASS THRU***

43" or 49" Long  
Lead Lining Available

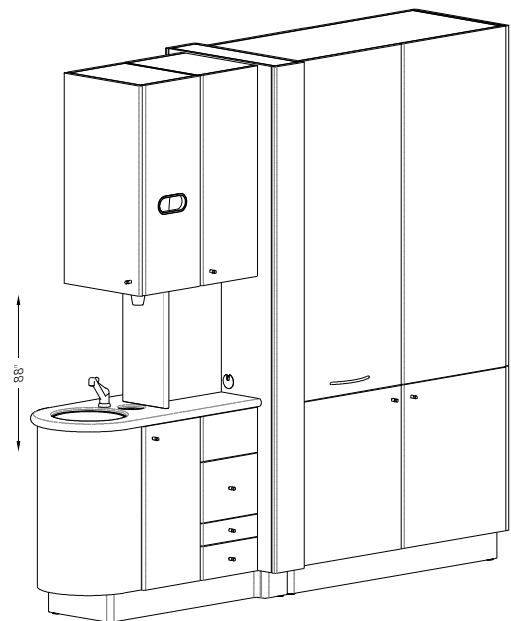
## OPTIONAL CONFIGURATIONS



***END OPTION ADDITIONS***

X-ray Enclosure w/  
Base Storage

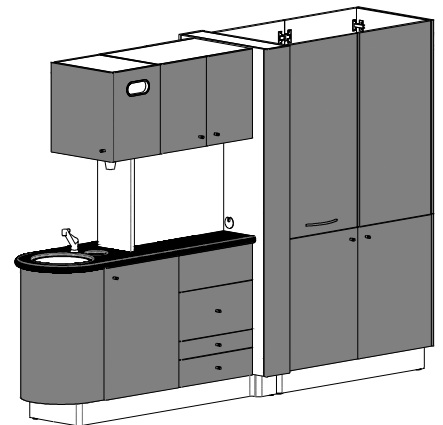
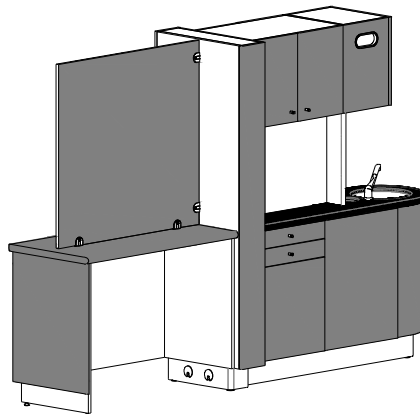
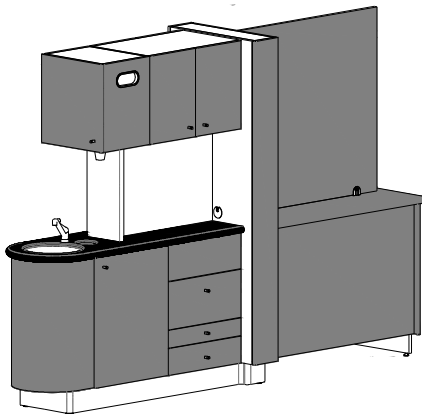
Upper Storage w/  
Drawer Storage & CPU



***TALL OPTION ADDITIONS***

CIR or CIRS  
X-ray Enclosure or Upper Storage





□ = BASE COLOR

■ = ACCENT

■ = COUNTER TOP

## BASE COLOR

- Surf
- Antique White

## COUNTER TOP COLORS

Solid Surface

Meridian Series - See brochure for standard options.  
Signature Series - See brochure for standard options, or specify color required.

## ACCENT / FINISHED BACK COLORS

Meridian Series - See brochure for standard options.  
Signature Series - Specify color required.

Plastic Laminate

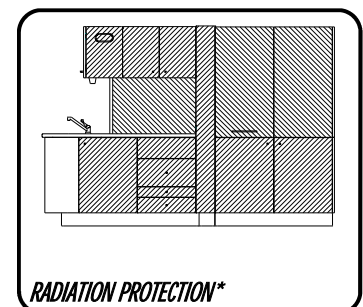
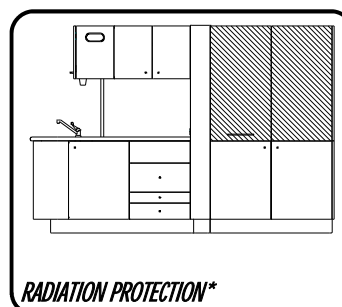
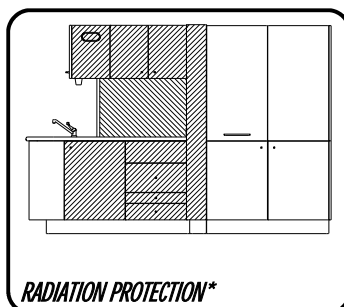
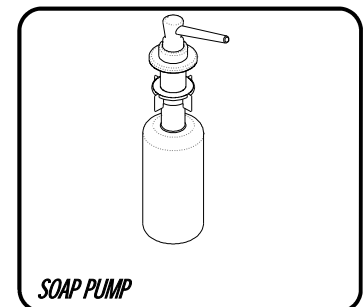
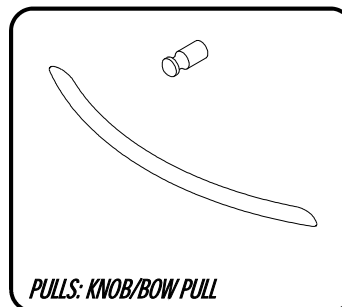
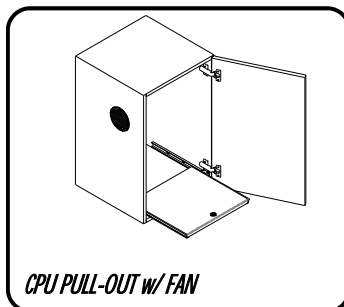
Meridian Series - See brochure for standard options.  
Signature Series - Specify color required.

Special order colors can be specified in Signature Series, upcharge may apply.

## SPECIAL COLOR INFORMATION

Other solid surface colors and laminates from Wilsonart, Formica, Nevamar and Pionite are available, subject to an additional charge, per color, per order. Color sample chips and other information is available on the internet and at local dealers specializing in these materials.

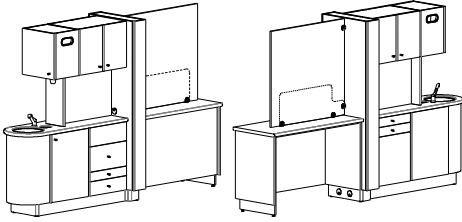
## OPTIONS & ACCESSORIES



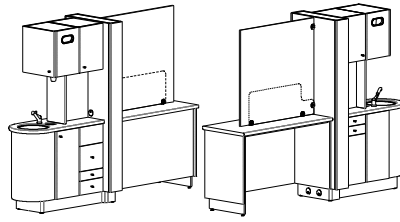
\*1/64" LEAD IN AREA SHOWN. BOW WOOD ACCEPTS NO RESPONSIBILITY FOR COMPLIANCE WITH YOUR LOCAL RADIATION PROTECTION LAWS. CHECK WITH YOUR GOVERNING BODY TO ASSURE COMPLIANCE.

PLEASE MARK AN "X" CLEARLY IN THE APPROPRIATE BOXES

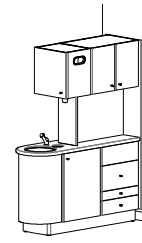
### 1 STANDARD CONFIGURATIONS



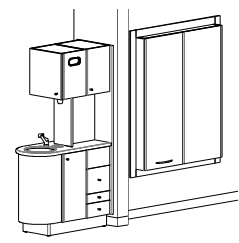
☐ CIR



☐ CIRS



☐ CIRH



☐ CIRS H

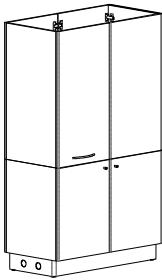
☐ XPT

CIR: ☐ 106" ☐ 112" CIRS: ☐ 90" ☐ 96" PT: ☐ 42" ☐ 49"

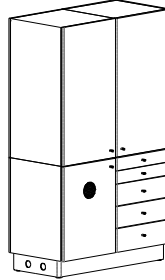
Countertop: ☐ Solid Surface ☐ Laminate

\$ \_\_\_\_\_

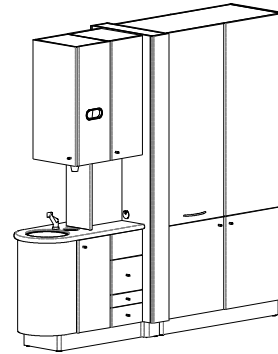
### 2 OPTIONAL CONFIGURATIONS



☐ X-ray Enclosure  
☐ Base Storage



☐ Upper Storage  
☐ Drawer Storage  
☐ CPU Cabinet



☐ Tall CIR ☐ Tall CIRS  
☐ Tall X-ray Enclosure  
☐ Tall Upper Storage

\$ \_\_\_\_\_

### 3 OPTIONS & ACCESSORIES

Hardware:	<input type="checkbox"/> Knob <input type="checkbox"/> Bow-Pull	\$ _____
Oval Windows:	<input type="checkbox"/> No <input type="checkbox"/> Yes (Qty: _____)	\$ _____
Extra Glove Dispensers	<input type="checkbox"/> No <input type="checkbox"/> Yes (Qty: _____)	\$ _____
Soap Pump:	<input type="checkbox"/> No <input type="checkbox"/> Yes	\$ _____
Foot Activated Faucet:	<input type="checkbox"/> No <input type="checkbox"/> Yes	\$ _____
Dual Foot Activated Faucet:	<input type="checkbox"/> No <input type="checkbox"/> Yes	\$ _____
Pan Viewer:	<input type="checkbox"/> No <input type="checkbox"/> Yes	\$ _____
R.P. - Sink End:	<input type="checkbox"/> No <input type="checkbox"/> Yes	\$ _____
R.P. - X-ray Enclosure:	<input type="checkbox"/> No <input type="checkbox"/> Yes	\$ _____
R.P. - Full Island:	<input type="checkbox"/> No <input type="checkbox"/> Yes	\$ _____
Additional Options / Notes:	_____	\$ _____
	_____	\$ _____
	_____	\$ _____

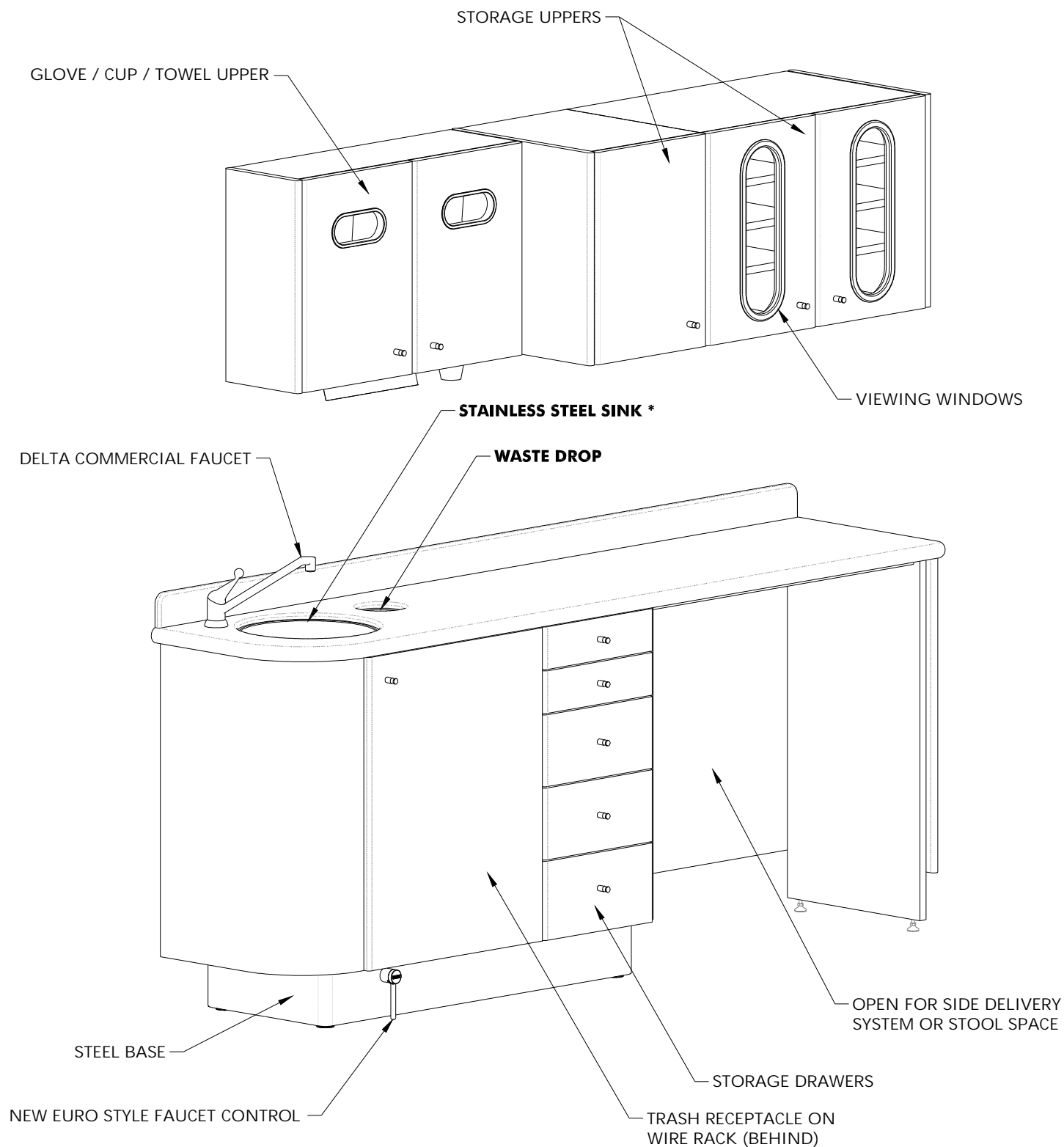
To Fit Lights:	<input type="checkbox"/> No <input type="checkbox"/> Yes	Make: _____	Model: _____
To Fit X-ray:	<input type="checkbox"/> No <input type="checkbox"/> Yes	Make: _____	Model: _____

### 4 COLORS

Base Color: ☐ Surf ☐ Antique White      Countertop Color: \_\_\_\_\_

Accent Color: \_\_\_\_\_ (Colors chosen other than Bow Wood Select may be subject to an upcharge): \$ \_\_\_\_\_

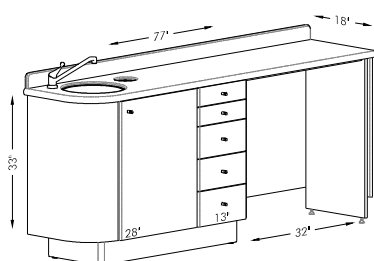
Doctor's Name: \_\_\_\_\_ Approved By: \_\_\_\_\_ Number of Units: \_\_\_\_\_ TOTAL: \$ \_\_\_\_\_



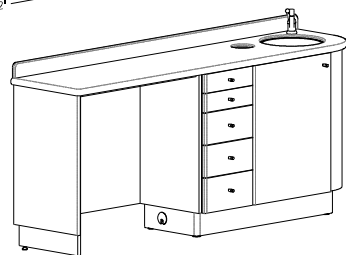
\*Sink under mounted when ordered w/ Solid Surface countertop.

**DRSL**

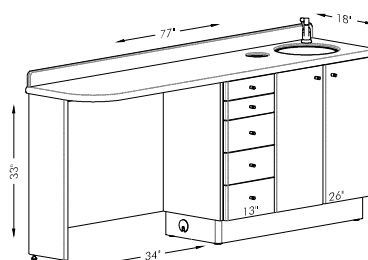
Some features shown are optional extras.



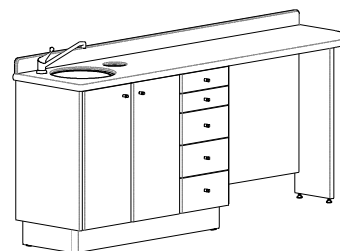
**DRSL**



**DRSR**

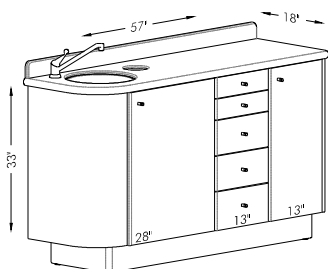


**DRSL-T**



**DRSR-T**

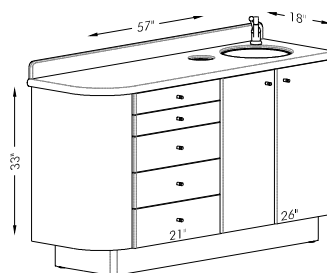
With Solid Surface or Laminate counters



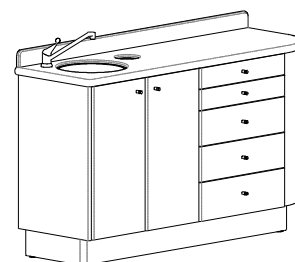
**ASTL**



**ASTR**

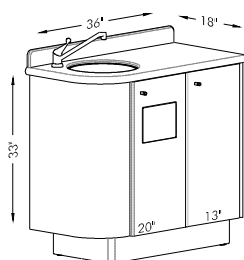


**ASTL-T**

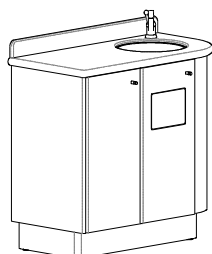


**ASTR-T**

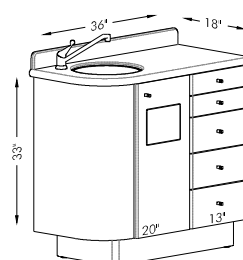
With Solid Surface or Laminate counters



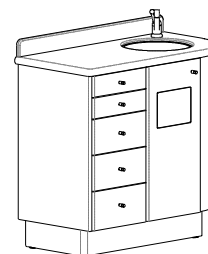
**WSL**



**WSR**

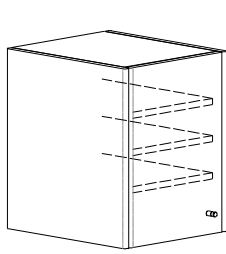


**WSLD**



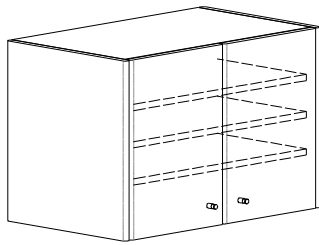
**WSRD**

With Solid Surface or Laminate counters



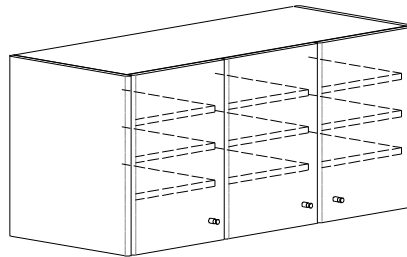
**STU-1**

13" Single Door



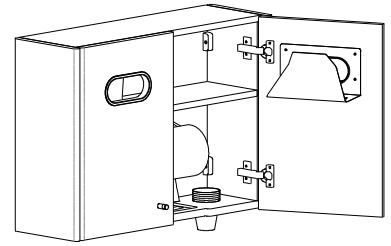
**STU-2**

26" Double Door



**STU-3**

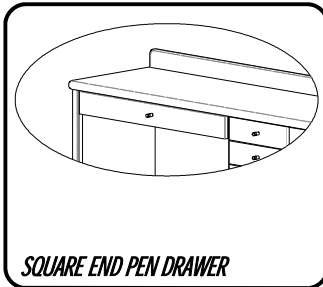
40" Triple Door



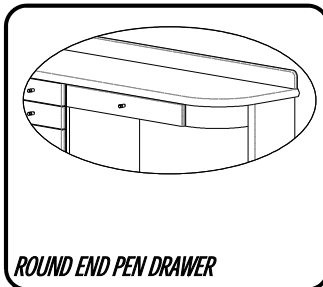
**GCT**

26" Double Door

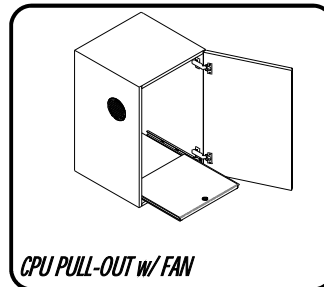
## OPTIONS & ACCESSORIES



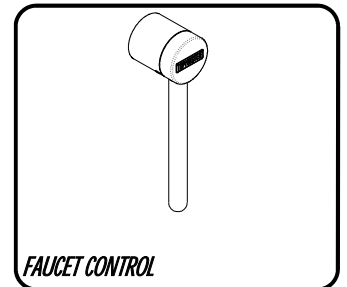
**SQUARE END PEN DRAWER**



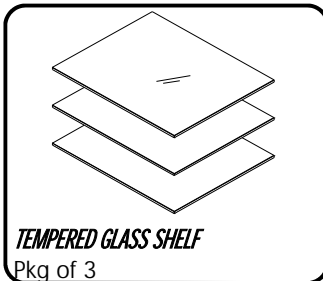
**ROUND END PEN DRAWER**



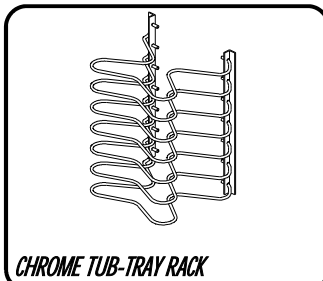
**CPU PULL-OUT w/ FAN**



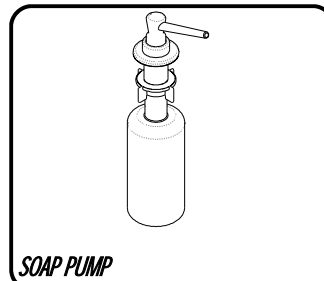
**FAUCET CONTROL**



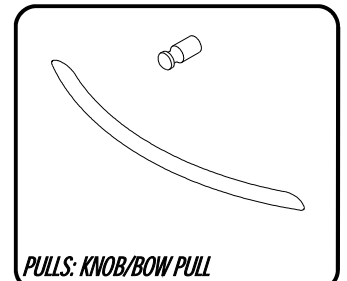
**TEMPERED GLASS SHELF**  
Pkg of 3



**CHROME TUB-TRAY RACK**

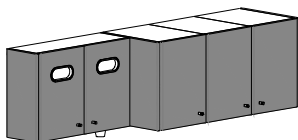


**SOAP PUMP**



**PULLS: KNOB/BOW PULL**

## COLOR LOCATIONS



□ = **BASE COLOR**

■ = **ACCENT**

■ = **COUNTER TOP**

### BASE COLOR

- Surf
- Antique White

### ACCENT COLORS

Meridian Series - See brochure for standard options.  
Signature Series - Specify color required.

### COUNTER TOP COLORS

#### Solid Surface

Meridian Series - See brochure for standard options.  
Signature Series - See brochure for standard options, or specify color required.

#### Plastic Laminate

Meridian Series - See brochure for standard options.  
Signature Series - Specify color required.

Special order colors can be specified in Signature Series, upcharge may apply.

## SPECIAL COLOR INFORMATION

Other solid surface colors and laminates from Wilsonart, Formica, Nevamar and Pionite are available, subject to an additional charge, per color, per order. Color sample chips and other information is available on the internet and at local dealers specializing in these materials.

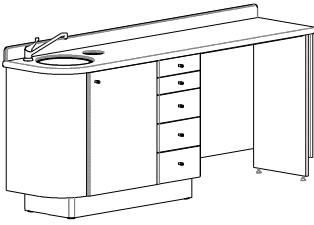
# SIDE CABINETS

## ORDER CHECKLIST

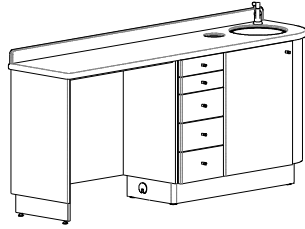
**Bow Wood**  
cabinet systems

PLEASE MARK AN "X" CLEARLY IN THE APPROPRIATE BOXES

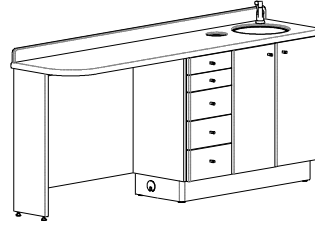
### 1 STANDARD CONFIGURATIONS



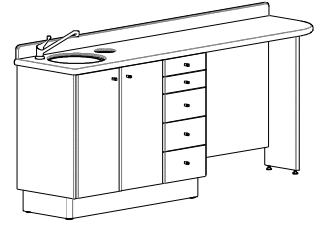
☐ **DRSI**



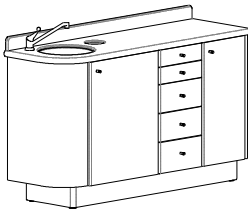
☐ **DRSR**



☐ **DRSI-T**



☐ **DRSR-T**



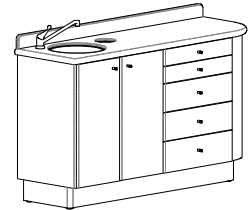
☐ **ASI**



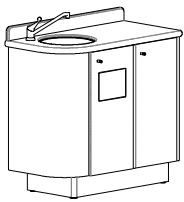
☐ **ASR**



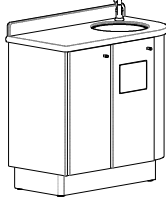
☐ **ASI-T**



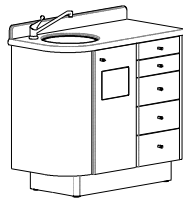
☐ **ASR-T**



☐ **WSI**



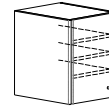
☐ **WSR**



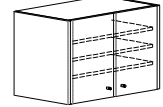
☐ **WSLD**



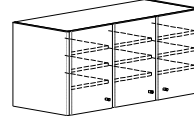
☐ **WSRD**



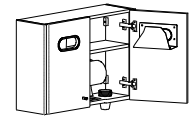
☐ **STU-1**



☐ **STU-2**



☐ **STU-3**



☐ **GCT**

Countertop: ☐ Solid Surface ☐ Laminate

\$ \_\_\_\_\_

### 2 OPTIONS & ACCESSORIES

Hardware:

☐ Knob ☐ Bow-Pull

\$ \_\_\_\_\_

Oval Windows:

☐ No ☐ Yes (Qty: \_\_\_\_\_)

\$ \_\_\_\_\_

Tempered Glass Shelves

☐ No ☐ Yes (Qty-pkg of 3: \_\_\_\_\_)

\$ \_\_\_\_\_

Chrome Tub/Tray Racks:

☐ No ☐ Yes

\$ \_\_\_\_\_

Soap Pump:

☐ No ☐ Yes

\$ \_\_\_\_\_

Foot Activated Faucet:

☐ No ☐ Yes

\$ \_\_\_\_\_

Square End Pen Drawer:

☐ No ☐ Yes

\$ \_\_\_\_\_

Round End Pen Drawer:

☐ No ☐ Yes

\$ \_\_\_\_\_

CPU Pull-out w/ Fan:

☐ No ☐ Single ☐ Dual

\$ \_\_\_\_\_

Additional Options / Notes: \_\_\_\_\_

\$ \_\_\_\_\_

\_\_\_\_\_

\$ \_\_\_\_\_

\_\_\_\_\_

\$ \_\_\_\_\_

### 3 COLORS

Base Color: ☐ Surf ☐ Antique White Countertop Color: \_\_\_\_\_

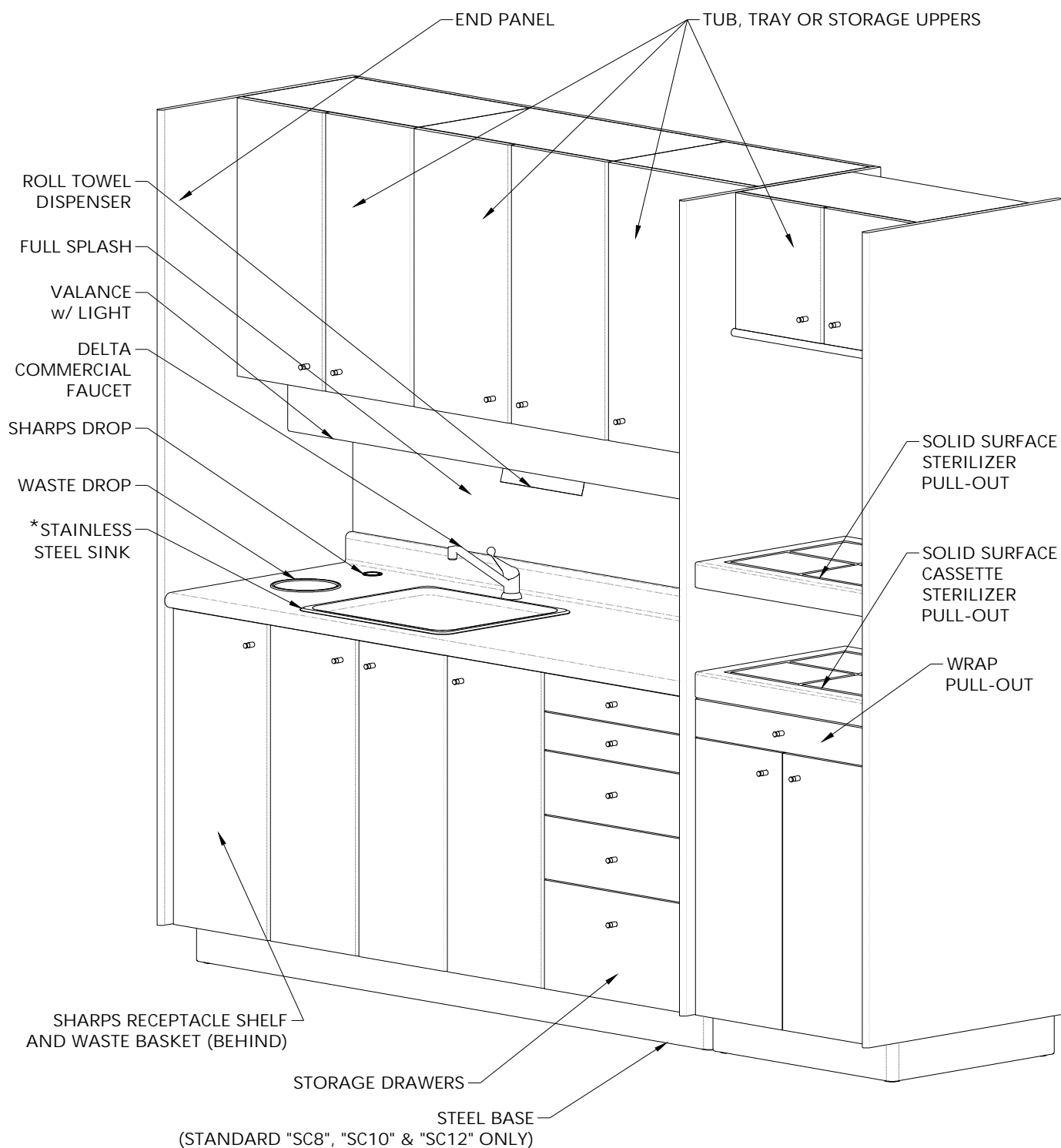
Accent Color: \_\_\_\_\_ (Colors chosen other than Bow Wood Select may be subject to an upcharge): \$ \_\_\_\_\_

Doctor's Name: \_\_\_\_\_ Approved By: \_\_\_\_\_ Number of Units: \_\_\_\_\_ TOTAL: \$ \_\_\_\_\_

# STERILIZATION CENTRE CABINETS

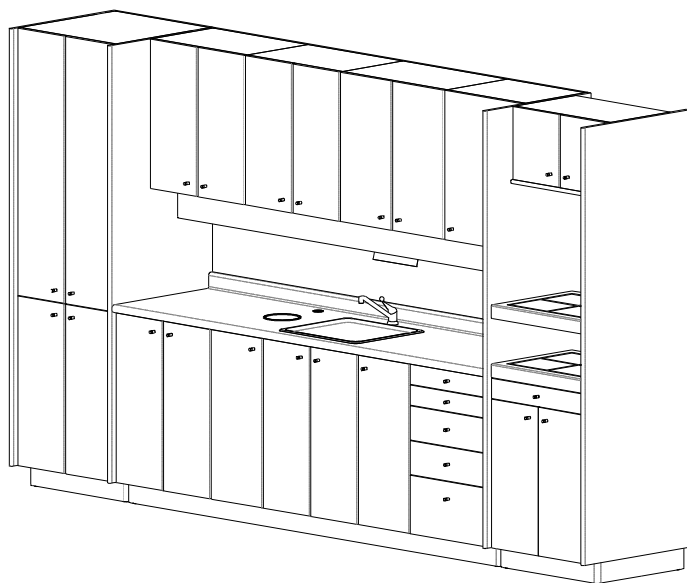
PRODUCT FEATURES

**BowWood**  
cabinet systems

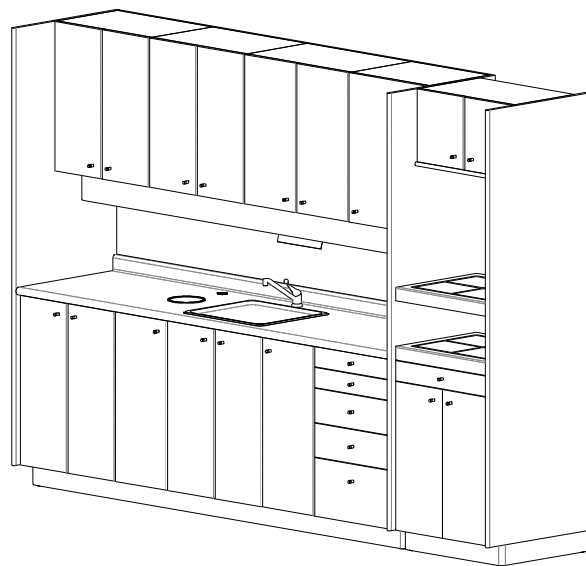


\*Sink under mounted when ordered w/ Solid Surface countertop.

*SC*



**SC12**

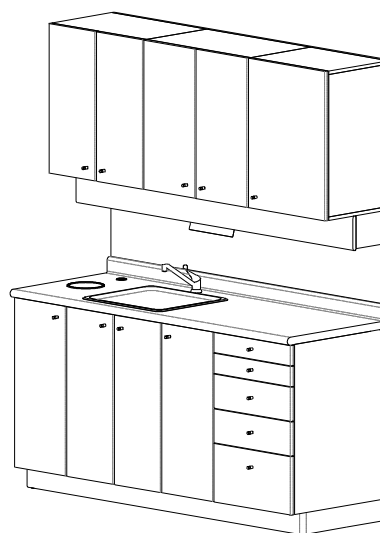


**SC10**

With Solid Surface or Laminate counters



**SC8**



**SC6**  
BASE MODULE 70"

With Solid Surface or Laminate counters

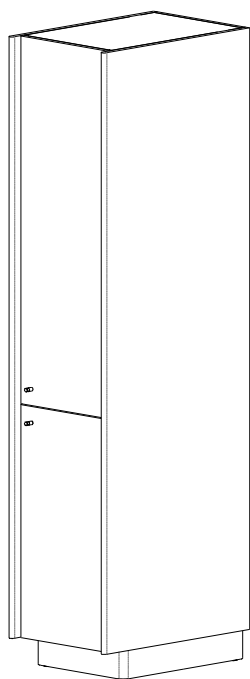
Sterilization Cabinets may be reversed left to right at no charge



# STERILIZATION CENTRE CABINETS

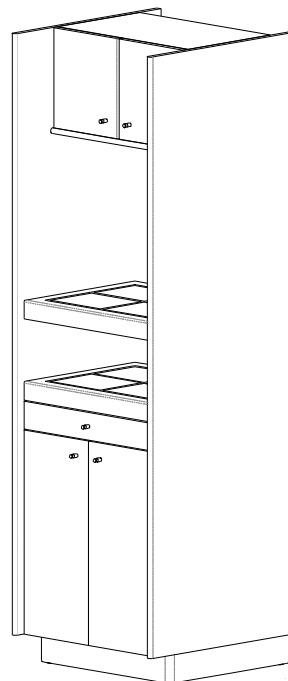
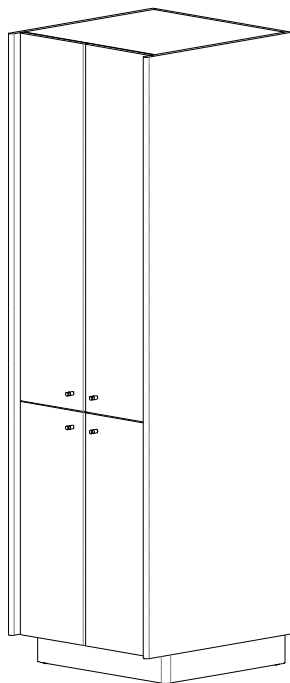
OPTIONAL CONFIGURATIONS

**Bow Wood**  
cabinet systems



**PANTRY MODULES**

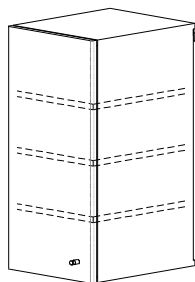
18" or 26"



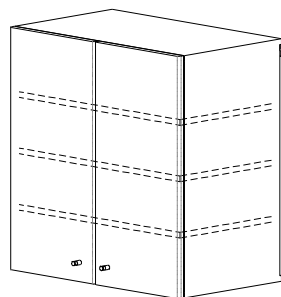
**SCT (TOWER)**



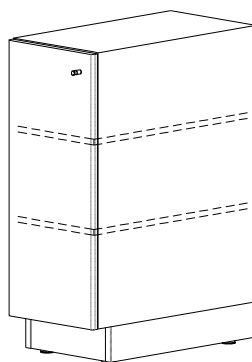
**END PANEL**



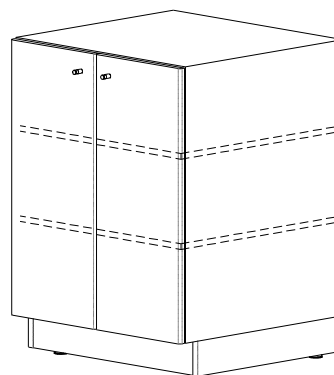
**SINGLE DOOR UPPER**  
12", 13", 16", 20"



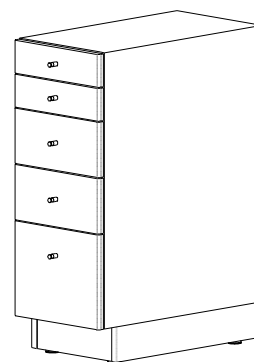
**DOUBLE DOOR UPPER**  
24", 26", 28", 32"



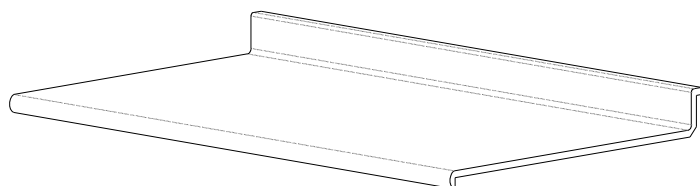
**SINGLE DOOR BASE**  
12", 13", 16", 20"



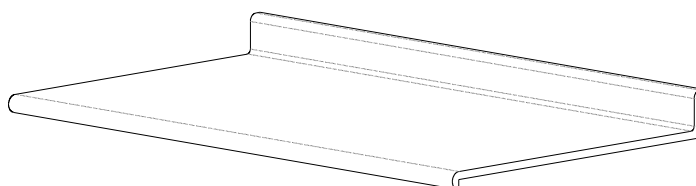
**DOUBLE DOOR BASE**  
24", 26", 28", 32"



**DRAWER BANK**  
12", 13", 16", 20"



**SOLID SURFACE COUNTER**  
COVED SPLASH



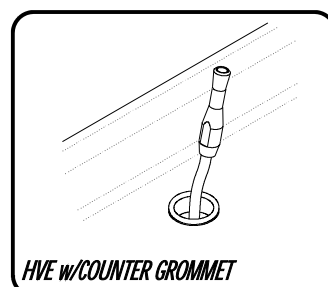
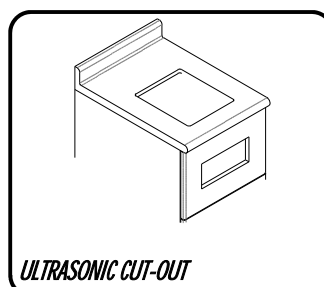
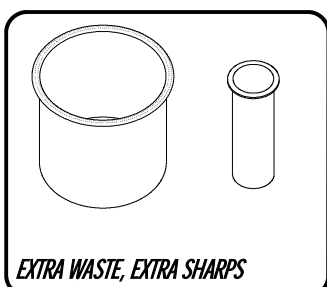
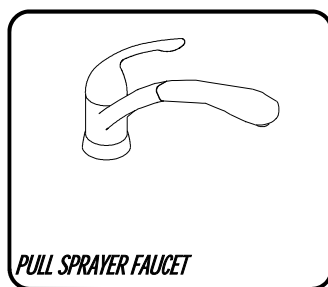
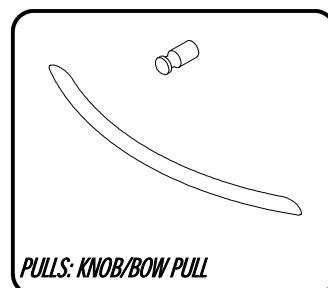
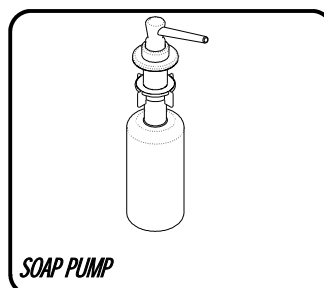
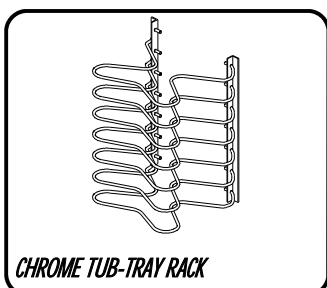
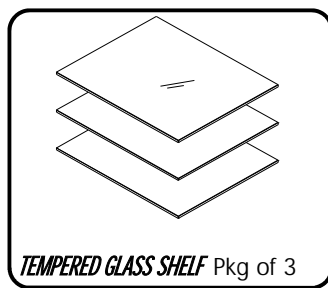
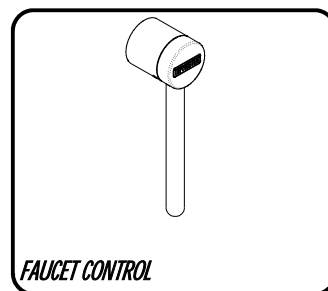
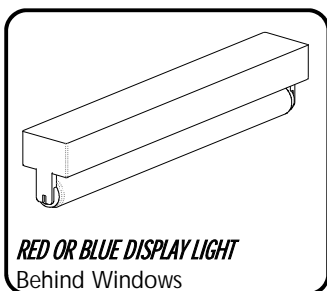
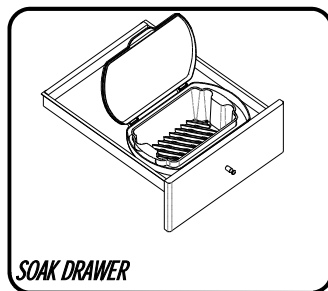
**LAMINATE COUNTER**

Consult your local Bow Wood representative for custom set-ups.

# STERILIZATION CENTRE CABINETS

## OPTIONS & ACCESSORIES

**BowWood**  
cabinet systems



## COLOR LOCATIONS



□ = **BASE COLOR**

■ = **ACCENT**

■ = **COUNTER TOP**

### BASE COLOR

- ☐ Surf
- ☐ Antique White

### ACCENT COLORS

Meridian Series - See brochure for standard options.  
Signature Series - Specify color required.

### COUNTER TOP COLORS

#### Solid Surface

Meridian Series - See brochure for standard options.  
Signature Series - See brochure for standard options, or specify color required.

#### Plastic Laminate

Meridian Series - See brochure for standard options.  
Signature Series - Specify color required.

Special order colors can be specified in Signature Series, upcharge may apply.

## SPECIAL COLOR INFORMATION

Other solid surface colors and laminates from Wilsonart, Formica, Nevamar and Pionite are available, subject to an additional charge, per color, per order. Color sample chips and other information is available on the internet and at local dealers specializing in these materials.

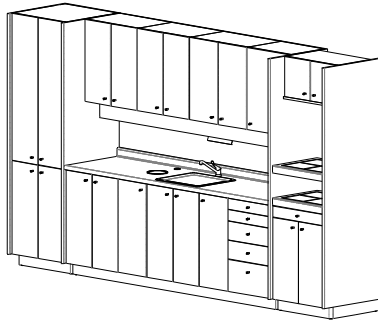
# STERILIZATION CENTRE CABINETS

## ORDER CHECKLIST

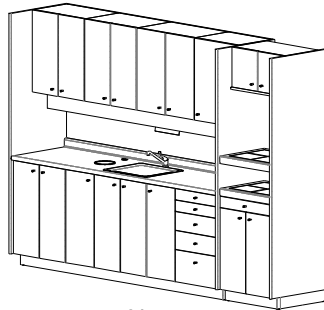
**Bow Wood**  
cabinet systems

PLEASE MARK AN "X" CLEARLY IN THE APPROPRIATE BOXES

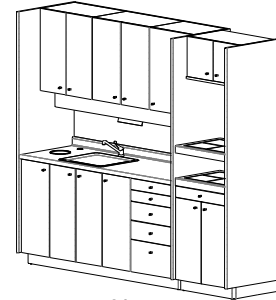
### 1 STANDARD CONFIGURATIONS



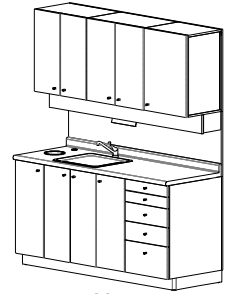
☐ SC12



☐ SC10



☐ SC8



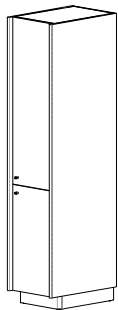
☐ SC6

Reverse from left to right: ☐ Yes ☐ No

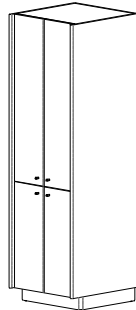
Countertop: ☐ Solid Surface ☐ Laminate

\$ \_\_\_\_\_

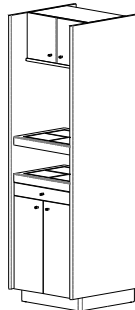
### 2 OPTIONAL CONFIGURATIONS



☐ 18" PANTRY



☐ 26" PANTRY

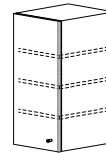


☐ SCT TOWER



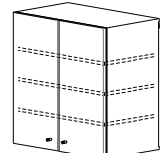
☐ END PANEL

- ☐ 12"
- ☐ 13"
- ☐ 16"
- ☐ 20"



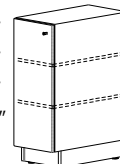
**SINGLE DOOR UPPER**

- ☐ 24"
- ☐ 26"
- ☐ 28"
- ☐ 32"



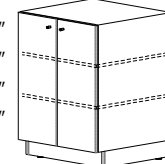
**DOUBLE DOOR UPPER**

- ☐ 12"
- ☐ 13"
- ☐ 16"
- ☐ 20"



**SINGLE DOOR BASE**

- ☐ 24"
- ☐ 26"
- ☐ 28"
- ☐ 32"



**DOUBLE DOOR BASE**

- ☐ 12"
- ☐ 13"
- ☐ 16"
- ☐ 20"



**DRAWER BANK**

Consult your representative for design assistance

Countertop: ☐ Solid Surface ☐ Laminate

\$ \_\_\_\_\_

### 3 OPTIONS & ACCESSORIES

- |                         |                               |  |          |
|-------------------------|-------------------------------|--|----------|
| Hardware:               | <input type="checkbox"/> Knob | <input type="checkbox"/> Bow-Pull                                    | \$ _____ |
| Soak Drawer:            | <input type="checkbox"/> No   | <input type="checkbox"/> Yes   | \$ _____ |
| Red Display Light:      | <input type="checkbox"/> No   | <input type="checkbox"/> Yes (Qty: _____)                            | \$ _____ |
| Blue Display Light:     | <input type="checkbox"/> No   | <input type="checkbox"/> Yes (Qty: _____)                            | \$ _____ |
| Oval Windows:           | <input type="checkbox"/> No   | <input type="checkbox"/> Yes (Qty: _____)                            | \$ _____ |
| Foot Activated Faucet:  | <input type="checkbox"/> No   | <input type="checkbox"/> Yes   | \$ _____ |
| Tempered Glass Shelves  | <input type="checkbox"/> No   | <input type="checkbox"/> Yes (Qty-pkg of 3: _____)                   | \$ _____ |
| Chrome Tub/Tray Racks:  | <input type="checkbox"/> No   | <input type="checkbox"/> Yes   | \$ _____ |
| Soap Pump:              | <input type="checkbox"/> No   | <input type="checkbox"/> Yes   | \$ _____ |
| Pullout Sprayer Faucet: | <input type="checkbox"/> No   | <input type="checkbox"/> Yes   | \$ _____ |
| Extra Waste Drop:       | <input type="checkbox"/> No   | <input type="checkbox"/> Yes (w/ KEY TRAY <input type="checkbox"/> ) | \$ _____ |
| Extra Sharps Drop:      | <input type="checkbox"/> No   | <input type="checkbox"/> Yes   | \$ _____ |
| Ultrasonic Cutout:      | <input type="checkbox"/> No   | <input type="checkbox"/> Single <input type="checkbox"/> Dual        | \$ _____ |
| HVE w/Counter Grommet   | <input type="checkbox"/> No   | <input type="checkbox"/> Yes   | \$ _____ |

Additional Options / Notes: \_\_\_\_\_  
 \_\_\_\_\_  
 \_\_\_\_\_

\$ \_\_\_\_\_  
 \$ \_\_\_\_\_  
 \$ \_\_\_\_\_  
 \$ \_\_\_\_\_  
 \$ \_\_\_\_\_  
 \$ \_\_\_\_\_  
 \$ \_\_\_\_\_  
 \$ \_\_\_\_\_  
 \$ \_\_\_\_\_  
 \$ \_\_\_\_\_  
 \$ \_\_\_\_\_  
 \$ \_\_\_\_\_

### 4 COLORS

Base Color: ☐ Surf ☐ Antique White Countertop Color: \_\_\_\_\_

Accent Color: \_\_\_\_\_ (Colors chosen other than Bow Wood Select may be subject to an upcharge): \$ \_\_\_\_\_

Doctor's Name: \_\_\_\_\_ Approved By: \_\_\_\_\_ Number of Units: \_\_\_\_\_ TOTAL: \$ \_\_\_\_\_

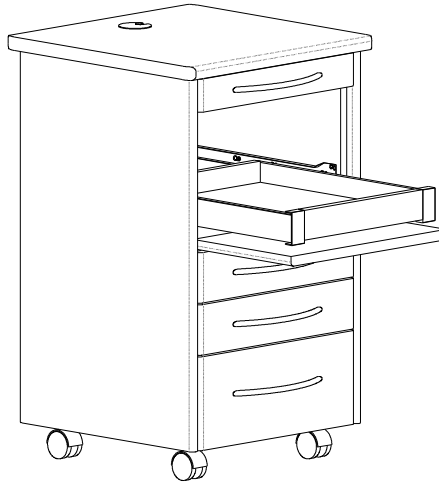
# MOBILE CART / PASS THROUGH

STANDARD CONFIGURATIONS

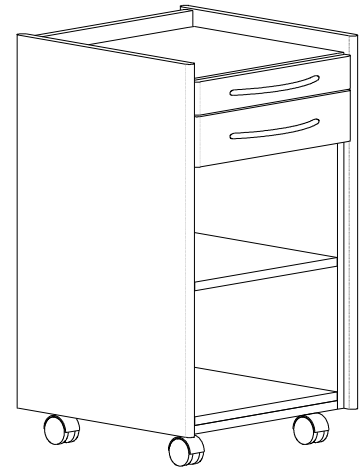
**BowWood**  
cabinet systems



**DOCTOR'S**  
16" or 18"

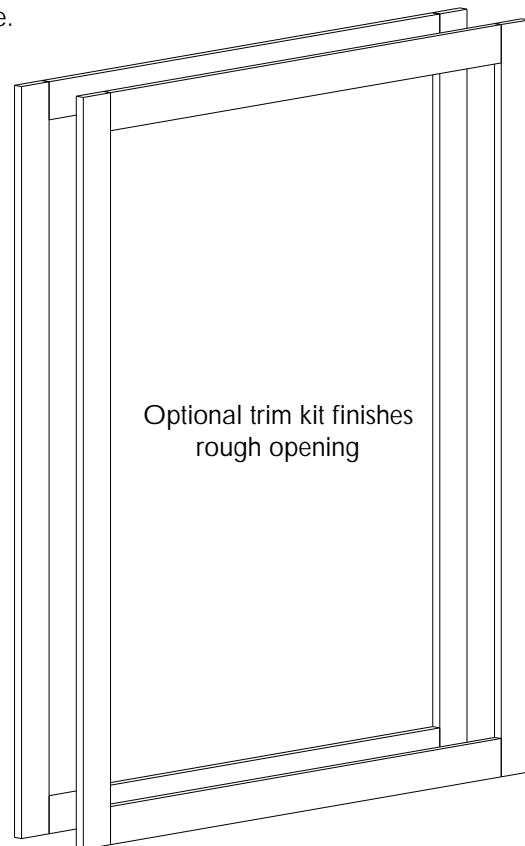
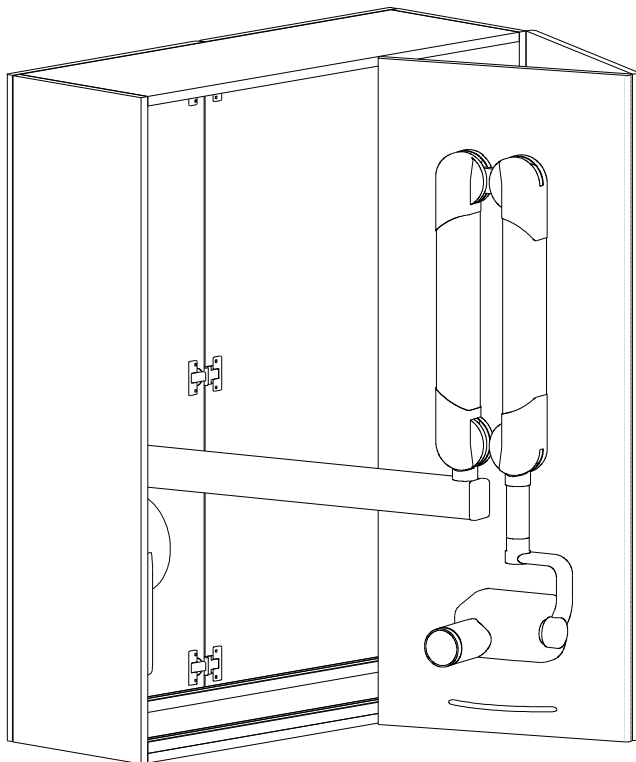


**ASSISTANT'S**  
16" or 18"



**UTILITY**  
16" or 18"

Base colors only. Accent colors may be specified subject to an upcharge.



**PASS THROUGH X-RAY CABINET**

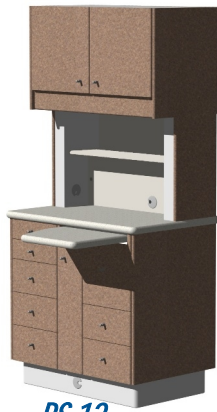
42" or 49" Long  
Lead Lining Available

## Color Location Guide

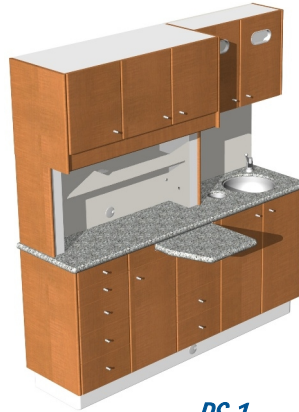
### Rear Support



RS



RS 12



RS 1



RS 2

### Centre Islands

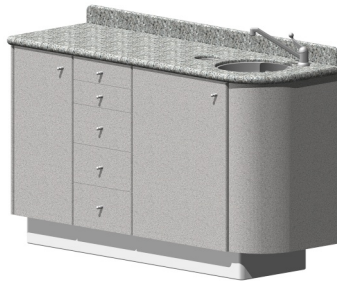


CIRS



CIR

### End Cabinets



ASTR



WS



DRSR-T



### Sterilization



SC10



SC6



SCT



*Beautiful eye-catching  
style to enhance your image*

### ***Bow Wood Values***

#### ***Integrity***

Fairness, honesty and trustworthiness.

#### ***Commitment***

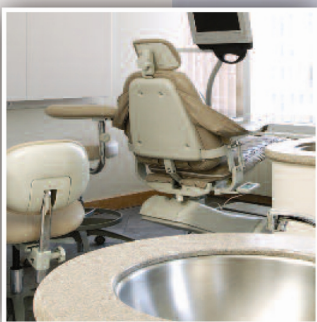
We treat each project as our own

#### ***Teamwork***

Together we can achieve more.

#### ***Continuous Improvement***

Continual learning underscores  
continual improvement.



**Bow Wood**  
cabinet systems

#### ***Bow Wood Inc.***

410 Railway Avenue, Oxbow, SK, S0C 2B0

Tel: 1-888-269-9663 • Fax: 1-306-483-2102

E-mail: [design@bowwood.net](mailto:design@bowwood.net) • Website: [www.bowwood.net](http://www.bowwood.net)

*Designed to fit. Built to perform.*